

October 27, 2021



GCAL Certificate No:

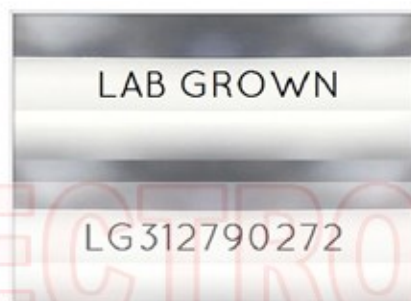
312790272



is the unique optical fingerprint for positive identification of your lab grown diamond. Protect your investment by registering your lab grown diamond at [www.Gemprint.com](http://www.Gemprint.com) and receive insurance discounts up to 10%



Gemprint



Girdle laser inscribed "LAB GROWN" and "LG312790272"

\*Comments: This laboratory grown diamond was created by the HPHT (High Pressure High Temperature) method, and has the same chemical, physical, and optical properties as a mined diamond.



**GCAL**

GEM CERTIFICATION & ASSURANCE LAB  
ISO 17025 ACCREDITED FORENSIC LABORATORY

580 Fifth Ave LL-05, New York, NY 10036  
T 212-869-8985 GCALUSA.com

© Gem Certification & Assurance Lab, Inc.



ISO/IEC 17025 2017  
ANAB L2177-1 Accredited Testing Lab

## LAB GROWN DIAMOND\*

Carat Weight:

0.90

Cut:

Very Good

Shape:

Emerald Step

Measurements:

6.51x4.62x3.21mm

Polish:

Excellent

External Symmetry:

Very Good

Girdle Thickness:

Medium-Thick

Culet Size:

None

Color:

E

Fluorescence:

None

Clarity:

VVS1

Identifying Characteristic(s):

Pinpoints

Characteristic Location(s):

Throughout Pavilion

## Proportion Diagram:

The proportion diagram illustrates the actual dimensions as recorded by optical scanning technology.

