

September 03, 2021



GCAL Certificate No:

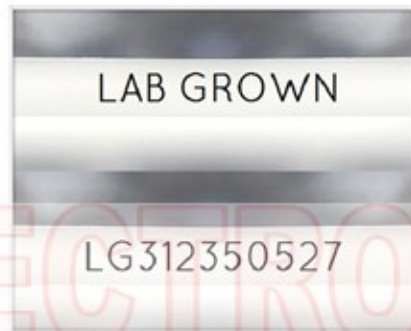
312350527



is the unique optical fingerprint for positive identification of your lab grown diamond. Protect your investment by registering your lab grown diamond at www.Gemprint.com and receive insurance discounts up to 10%



Gemprint



Girdle laser inscribed "LAB GROWN" and "LG312350527"

*Comments: This laboratory grown diamond was created by the CVD (Chemical Vapor Deposition) method, and has the same chemical, physical, and optical properties as a mined diamond. This diamond is Type IIa, which means it is devoid of nitrogen impurities.



GCAL GEM CERTIFICATION & ASSURANCE LAB
ISO 17025 ACCREDITED FORENSIC LABORATORY

580 Fifth Ave LL-05, New York, NY 10036
T 212-869-8985 GCALUSA.com

© Gem Certification & Assurance Lab, Inc.



ISO/IEC 17025 2017
ANAB L2177-1 Accredited Testing Lab

LAB GROWN DIAMOND*

Carat Weight:	1.50
Cut:	Excellent
Shape:	Princess
Measurements:	6.22x6.16x4.58mm
Polish:	Excellent
External Symmetry:	Very Good
Girdle Thickness:	Thin-Medium
Culet Size:	None
Color:	F
Fluorescence:	None
Clarity:	VS1
Identifying Characteristic(s):	Crystal, Pinpoints
Characteristic Location(s):	Table

Proportion Diagram:

The proportion diagram illustrates the actual dimensions as recorded by optical scanning technology.

