

## Identification Data



August 18, 2021

LAB GROWN DIAMOND

Certificate No: 312070147



Gemprint is the unique optical fingerprint for positive identification of your lab grown diamond. Register your lab grown diamond at [www.Gemprint.com](http://www.Gemprint.com) and receive insurance discounts up to 10%.



### Laser Inscription:

The illustration depicts enlarged and approximate appearances of the inscriptions. Girdle laser inscribed "LAB GROWN" and "LG312070147"



## The 4Cs Grading Analysis

GCAL 312070147

LAB GROWN DIAMOND\*

Carat Weight:

0.77

Cut:

Very Good

Shape:

Pear Brilliant

Measurements:

8.10x5.10x3.12mm

Optical Brilliance:

Excellent

Optical Symmetry:

Good

Polish:

Excellent

External Symmetry:

Very Good

Girdle Thickness:

Thin-Thick

Culet Size:

None

Color:

D

Fluorescence:

None

Clarity:

VS1

Identifying Characteristic(s):

Clouds/Crystals/Needles

Characteristic Location(s):

Bezel-Upper Girdle/

Upper Girdle, Bezel/Bezel, Upper Girdle, Table

\*Comments: This laboratory grown diamond was created by the HPHT (High Pressure High Temperature) method, and has the same chemical, physical, and optical properties as a mined diamond.

### Photomicrographs:

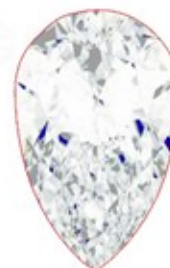
Actual images of the crown (top) and pavilion (bottom) of this diamond photographed at magnifications up to 10x.



## Light Performance Profile

### Optical Brilliance Analysis:

Brilliance is the overall return of light to the viewer. The brilliance image is a representation of (a) white areas of light return, or brilliance, and (b) dark-blue areas of light loss.



Optical Brilliance  
Excellent

### Optical Symmetry Analysis:

The colored areas of the symmetry image are indications of light handling ability, giving a visual representation of proportions and facet alignment.



Optical Symmetry  
Good

### Proportion Diagram:

The proportion diagram illustrates the actual dimensions as recorded by optical scanning technology.



**GCAL** GEM CERTIFICATION & ASSURANCE LAB  
ISO 17025 ACCREDITED FORENSIC LABORATORY

580 Fifth Ave LL-05  
New York, NY 10036  
T 212-869-8985  
GCALUSA.com



ISO/IEC 17025 2017  
ANAB L2177-1 Accredited Testing Lab