

June 30, 2021



GCAL Certificate No:

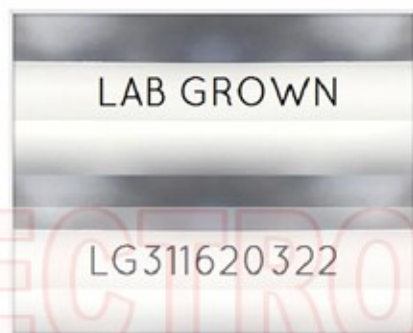
311620322



is the unique optical fingerprint for positive identification of your lab grown diamond. Protect your investment by registering your lab grown diamond at [www.Gemprint.com](http://www.Gemprint.com) and receive insurance discounts up to 10%



Gemprint



Girdle laser inscribed "LAB GROWN" and "LG311620322"

\*Comments: This man-made diamond was grown in a laboratory by the CVD method, and has the same chemical, physical, and optical properties as a natural earth mined diamond. This lab grown diamond is classified as Type IIa, which is the most chemically pure type of diamond, and almost or entirely devoid of impurities. Only 1-2% of natural earth mined diamonds are Type IIa, whereas, colorless and near-colorless CVD lab grown diamonds are usually Type IIa.



**GCAL** GEM CERTIFICATION & ASSURANCE LAB  
ISO 17025 ACCREDITED FORENSIC LABORATORY

580 Fifth Ave LL-05, New York, NY 10036  
T 212-869-8985 GCALUSA.com

© Gem Certification & Assurance Lab, Inc.



ISO/IEC 17025 2017  
ANAB L2177-1 Accredited Testing Lab

## LAB GROWN DIAMOND\*

<b>Carat Weight:</b>	<b>2.04</b>
<b>Cut:</b>	<b>Excellent</b>
Shape:	Princess
Measurements:	6.94x6.90x5.02mm
Polish:	Very Good
External Symmetry:	Very Good
Girdle Thickness:	Thin-Medium
Culet Size:	None

<b>Color:</b>	<b>G</b>
Fluorescence:	None

<b>Clarity:</b>	<b>VS1</b>
Identifying Characteristic(s):	Clouds
Characteristic Location(s):	Crown Step, Table, Throughout Crown

### Proportion Diagram:

The proportion diagram illustrates the actual dimensions as recorded by optical scanning technology.

