

June 23, 2021



GCAL Certificate No:

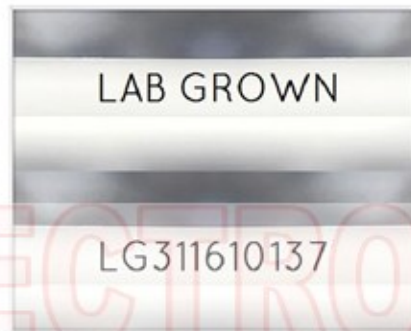
311610137



is the unique optical fingerprint for positive identification of your lab grown diamond. Protect your investment by registering your lab grown diamond at www.Gemprint.com and receive insurance discounts up to 10%



Gemprint



Girdle laser inscribed "LAB GROWN" and "LG311610137"

*Comments: This man-made diamond was grown in a laboratory by the CVD method, and has the same chemical, physical, and optical properties as a natural earth mined diamond. This lab grown diamond is classified as Type IIa, which is the most chemically pure type of diamond, and almost or entirely devoid of impurities. Only 1-2% of natural earth mined diamonds are Type IIa, whereas, colorless and near-colorless CVD lab grown diamonds are usually Type IIa.



GCAL GEM CERTIFICATION & ASSURANCE LAB
ISO 17025 ACCREDITED FORENSIC LABORATORY

580 Fifth Ave LL-05, New York, NY 10036
T 212-869-8985 GCALUSA.com

© Gem Certification & Assurance Lab, Inc.



ISO/IEC 17025 2017
ANAB L2177-1 Accredited Testing Lab

LAB GROWN DIAMOND*

Carat Weight:	1.16
Cut:	Excellent
Shape:	Princess
Measurements:	5.69x5.65x4.15mm
Polish:	Excellent
External Symmetry:	Very Good
Girdle Thickness:	Thick
Culet Size:	None
Color:	F
Fluorescence:	None
Clarity:	VS1
Identifying Characteristic(s):	Crystal/Pinpoints
Characteristic Location(s):	Crown Step/Table, Crown Shoulder

Proportion Diagram:

The proportion diagram illustrates the actual dimensions as recorded by optical scanning technology.

