

February 16, 2021



GCAL Certificate No:

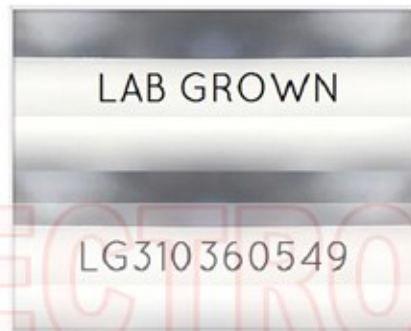
310360549



is the unique optical fingerprint for positive identification of your lab grown diamond. Protect your investment by registering your lab grown diamond at www.Gemprint.com and receive insurance discounts up to 10%



Gemprint



Girdle laser inscribed "LAB GROWN" and "LG310360549"

*Comments: This man-made diamond was grown in a laboratory by the CVD method, and has the same chemical, physical, and optical properties as a natural earth mined diamond. This lab grown diamond is classified as Type IIa, which is the most chemically pure type of diamond, and almost or entirely devoid of impurities. Only 1-2% of natural earth mined diamonds are Type IIa, whereas, colorless and near-colorless CVD lab grown diamonds are usually Type IIa.



GEM CERTIFICATION & ASSURANCE LAB
ISO 17025 ACCREDITED FORENSIC LABORATORY

ISO/IEC 17025 2017
ANAB L2177-1
Accredited Testing Lab



LAB GROWN DIAMOND*

| | |
|----------------------|------------------|
| Carat Weight: | 1.66 |
| Cut: | Excellent |
| Shape: | Princess |
| Measurements: | 6.44x6.37x4.73mm |
| Polish: | Good |
| External Symmetry: | Very Good |
| Girdle Thickness: | Thin-Medium |
| Culet Size: | None |

| | |
|---------------|----------|
| Color: | H |
| Fluorescence: | None |

| | |
|--------------------------------|--------------------------------|
| Clarity: | VS2 |
| Identifying Characteristic(s): | Clouds |
| Characteristic Location(s): | Crown Corner, Table-Crown Step |

Proportion Diagram:

The proportion diagram illustrates the actual dimensions as recorded by optical scanning technology.

