

February 01, 2021



GCAL Certificate No:

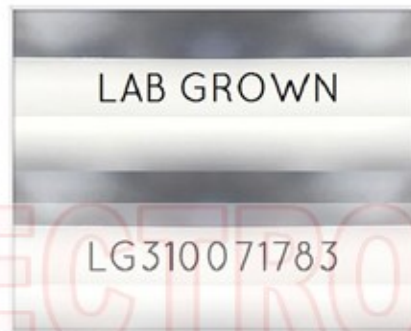
310071783



is the unique optical fingerprint for positive identification of your lab grown diamond. Protect your investment by registering your lab grown diamond at [www.Gemprint.com](http://www.Gemprint.com) and receive insurance discounts up to 10%



Gemprint



Girdle laser inscribed "LAB GROWN" and "LG310071783"

\*Comments: This man-made diamond was grown in a laboratory by the CVD method, and has the same chemical, physical, and optical properties as a natural earth mined diamond. This lab grown diamond is classified as Type IIa, which is the most chemically pure type of diamond, and almost or entirely devoid of impurities. Only 1-2% of natural earth mined diamonds are Type IIa, whereas, colorless and near-colorless CVD lab grown diamonds are usually Type IIa.



GEM CERTIFICATION & ASSURANCE LAB  
ISO 17025 ACCREDITED FORENSIC LABORATORY

ISO/IEC 17025 2017  
ANAB L2177-1  
Accredited Testing Lab



## LAB GROWN DIAMOND\*

Carat Weight: 1.66

Cut: Very Good

Shape: Princess

Measurements: 6.52x6.52x4.76mm

Polish: Very Good

External Symmetry: Very Good

Girdle Thickness: Thin-Medium

Culet Size: None

Color: F

Fluorescence: None

Clarity: VS2

Identifying Characteristic(s): Crystals

Characteristic Location(s): Table, Crown Step, Crown Shoulder

### Proportion Diagram:

The proportion diagram illustrates the actual dimensions as recorded by optical scanning technology.

