

November 17, 2020



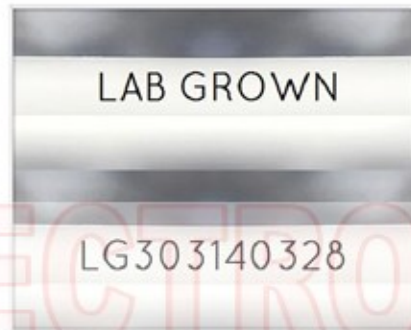
GCAL Certificate No:

303140328

**Gemprint** is the unique optical fingerprint for positive identification of your lab grown diamond. Protect your investment by registering your lab grown diamond at [www.Gemprint.com](http://www.Gemprint.com) and receive insurance discounts up to 10%



Gemprint



Girdle laser inscribed "LAB GROWN" and "LG303140328"

\*Comments: This man-made diamond was grown in a laboratory by the CVD method, and has the same chemical, physical, and optical properties as a natural earth mined diamond. This lab grown diamond is classified as Type IIa, which is the most chemically pure type of diamond, and almost or entirely devoid of impurities. Only 1-2% of natural earth mined diamonds are Type IIa, whereas, colorless and near-colorless CVD lab grown diamonds are usually Type IIa.



## LAB GROWN DIAMOND\*

<b>Carat Weight:</b>	<b>1.68</b>
<b>Cut:</b>	<b>Excellent</b>
Shape:	Princess
Measurements:	6.49x6.43x4.66mm
Polish:	Excellent
External Symmetry:	Very Good
Girdle Thickness:	Medium-Sl.Thick
Culet Size:	None
<b>Color:</b>	<b>H</b>
Fluorescence:	None
<b>Clarity:</b>	<b>VS2</b>
Identifying Characteristic(s):	Crystals, Needles/Feathers
Characteristic Location(s):	Table/Table, Pavilion

### Proportion Diagram:

The proportion diagram illustrates the actual dimensions as recorded by optical scanning technology.

