

July 24, 2020



GCAL Certificate No:

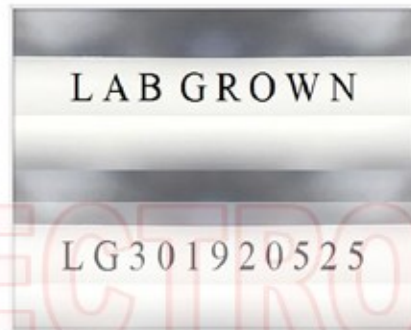
301920525



is the unique optical fingerprint for positive identification of your lab grown diamond. Protect your investment by registering your lab grown diamond at www.Gemprint.com and receive insurance discounts up to 10%



Gemprint



Girdle laser inscribed "LAB GROWN" and "LG301920525"

*Comments: This man-made diamond was grown in a laboratory by the CVD method, and has the same chemical, physical, and optical properties as a natural earth mined diamond. This lab grown diamond is classified as Type IIa, which is the most chemically pure type of diamond, and almost or entirely devoid of impurities. Only 1-2% of natural earth mined diamonds are Type IIa, whereas, colorless and near-colorless CVD lab grown diamonds are usually Type IIa.



LAB GROWN DIAMOND*

Carat Weight: 1.03

Cut: Very Good

Shape: Emerald Step

Measurements: 6.89x4.80x3.19mm

Polish: Good

External Symmetry: Very Good

Girdle Thickness: Thick

Culet Size: None

Color: G

Fluorescence: None

Clarity: VS1

Identifying Characteristic(s): Crystals/Feathers

Characteristic Location(s): Table, Crown Step/Pavilion Step

Proportion Diagram:

The proportion diagram illustrates the actual dimensions as recorded by optical scanning technology.

