

April 03, 2018



GCAL Certificate No:

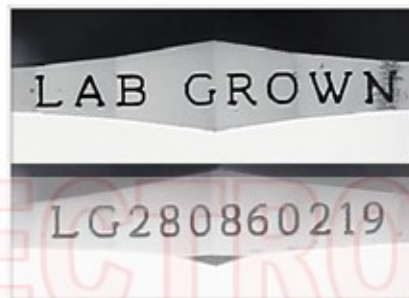
280860219



is the unique optical fingerprint for positive identification of your lab grown diamond. Protect your investment by registering your lab grown diamond at [www.Gemprint.com](http://www.Gemprint.com) and receive insurance discounts up to 10%



Gemprint



Girdle laser inscribed "LAB GROWN" and "LG280860219"

\*Comments: This man-made diamond was grown in a laboratory by the CVD method, and has the same chemical, physical, and optical properties as a natural earth mined diamond. This lab grown diamond is classified as Type IIa, which is the most chemically pure type of diamond, and almost or entirely devoid of impurities. Only 1-2% of natural earth mined diamonds are Type IIa, whereas, colorless and near-colorless CVD lab grown diamonds are usually Type IIa.



### LAB GROWN DIAMOND\*

<b>Carat Weight:</b>	<b>1.09</b>
<b>Cut:</b>	<b>Excellent</b>
Shape:	Round Brilliant
Measurements:	6.57-6.60x4.10mm
Polish:	Very Good
External Symmetry:	Very Good
Girdle Thickness:	Medium
Culet Size:	None
<b>Color:</b>	<b>I</b>
Fluorescence:	None
<b>Clarity:</b>	<b>VS2</b>
Identifying Characteristic(s):	Feathers/Crystal
Characteristic Location(s):	Upper Girdles, Bezel/Table

### Proportion Diagram:

The proportion diagram illustrates the actual dimensions as recorded by optical scanning technology.

