

June 23, 2017

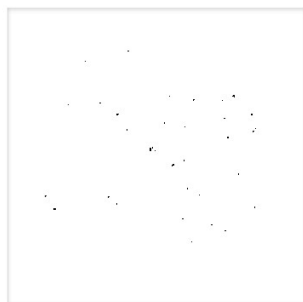


GCAL Certificate No:

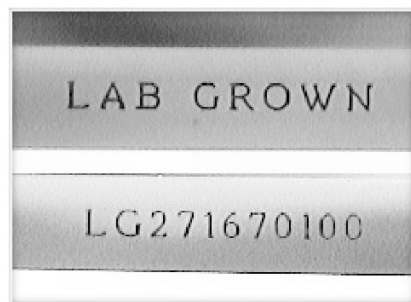
271670100



is the unique optical fingerprint for positive identification of your lab grown diamond. Protect your investment by registering your lab grown diamond at [www.Gemprint.com](http://www.Gemprint.com) and receive insurance discounts up to 10%



Gemprint



Girdle laser inscribed "LAB GROWN" and "LG271670100"

\*Comments: This man-made diamond was grown in a laboratory by the CVD method, and has the same chemical, physical, and optical properties as a natural earth mined diamond. This lab grown diamond is classified as Type IIa, which is the most chemically pure type of diamond, and almost or entirely devoid of impurities. Only 1-2% of natural earth mined diamonds are Type IIa, whereas, colorless and near-colorless CVD lab grown diamonds are usually Type IIa.



## LAB GROWN DIAMOND

Carat Weight: 1.82

Cut: Very Good

Shape: Princess

Measurements: 6.79x6.67x4.49mm

Polish: Excellent

External Symmetry: Good

Girdle Thickness: SI.Thick-Thick

Culet Size: None

Color: H

Fluorescence: None

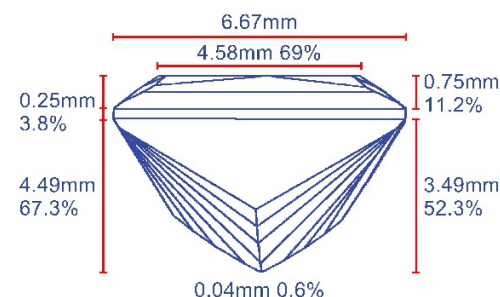
Clarity: SI1

Identifying Characteristic(s): Growth Characteristics

Characteristic Location(s): Throughout Crown

### Proportion Diagram:

The proportion diagram illustrates the actual dimensions as recorded by optical scanning technology.



580 Fifth Avenue, LL-05, New York, NY 10036  
T 212.869.8985 F 212.869.2315

[www.DiamondID.com](http://www.DiamondID.com) [www.GemFacts.com](http://www.GemFacts.com)  
© 2015 Gem Certification & Assurance Lab, Inc. All Rights Reserved