

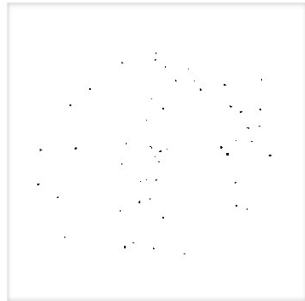
April 24, 2017



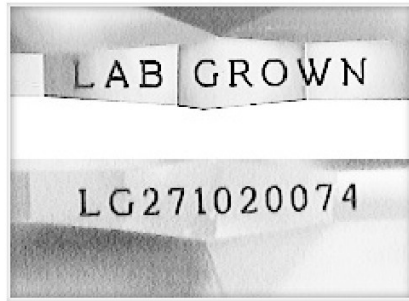
GCAL Certificate No:

271020074

**Gemprint** is the unique optical fingerprint for positive identification of your lab grown diamond. Protect your investment by registering your lab grown diamond at [www.Gemprint.com](http://www.Gemprint.com) and receive insurance discounts up to 10%



Gemprint



Girdle laser inscribed "LAB GROWN" and "LG271020074"

\*Comments: This man-made diamond was grown in a laboratory by the CVD method, and has the same chemical, physical, and optical properties as a natural earth mined diamond. This lab grown diamond is classified as Type IIa, which is the most chemically pure type of diamond, and almost or entirely devoid of impurities. Only 1-2% of natural earth mined diamonds are Type IIa, whereas, colorless and near-colorless CVD lab grown diamonds are usually Type IIa.

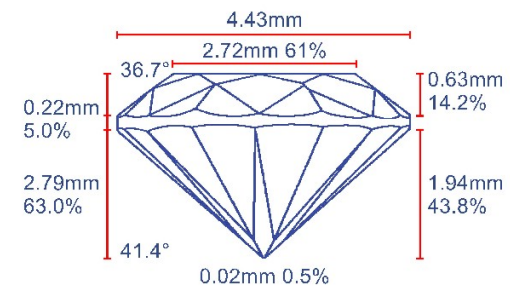


## LAB GROWN DIAMOND

<b>Carat Weight:</b>	<b>0.51</b>
<b>Cut:</b>	<b>Very Good</b>
Shape:	Oval Brilliant
Measurements:	6.35x4.43x2.79mm
Polish:	Very Good
External Symmetry:	Very Good
Girdle Thickness:	Medium-SI.Thick
Culet Size:	None
<b>Color:</b>	<b>G</b>
Fluorescence:	None
<b>Clarity:</b>	<b>VS1</b>
Identifying Characteristic(s):	Growth Characteristics
Characteristic Location(s):	Throughout Crown

### Proportion Diagram:

The proportion diagram illustrates the actual dimensions as recorded by optical scanning technology.



580 Fifth Avenue, LL-05, New York, NY 10036  
T 212.869.8985 F 212.869.2315

[www.DiamondID.com](http://www.DiamondID.com) [www.GemFacts.com](http://www.GemFacts.com)  
© 2015 Gem Certification & Assurance Lab, Inc. All Rights Reserved