

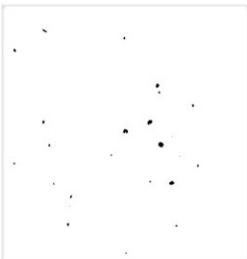
LAB GROWN DIAMOND

GCAL LG360440173

February 24, 2026



The fingerprint system for diamonds



ID No. NY02-784688

Gemprint is the unique optical fingerprint of your lab grown diamond. This patented technology is positive, forensic identification. Protect your investment and receive discounts up to 10% off your annual insurance premiums.

Register your diamond at Gemprint.com

Laser Inscription



Illustration depicts approx. girdle appearance

Proportion Diagram



GCAL Certificate No. LG360440173

Scan QR code to view details of this lab grown diamond, grading scales, and to download a PDF of this certificate or go to <https://www.gcalusa.com/c/360440173>



4C's GRADING

| | |
|--------------|-----------|
| Carat Weight | 2.98 |
| Color | E |
| Clarity | VS2 |
| Cut | Very Good |

| | |
|-------------------------|--------------------------------------|
| Shape and Cutting Style | Radiant Brilliant |
| Measurements | 9.56x6.97x4.99mm |
| Polish | Excellent |
| Physical Symmetry | Very Good |
| Optical Brilliance | Good |
| Optical Symmetry | Good |
| Table % | 61% |
| Depth % | 71.5% |
| Girdle | Thick - Very Thick |
| Culet | None |
| Fluorescence | None |
| Inscription | GCAL Logo & "LG360440173" |
| Growth Method | CVD |

This laboratory grown diamond was created by the CVD (Chemical Vapor Deposition) method, and has the same chemical, physical and optical properties as a mined diamond.

Clarity Characteristics and Locations

| | |
|----------|--------------------------------------|
| Crystals | Crown Step, Table |
| Feathers | Crown Girdle, Crown Shoulder, Girdle |



The specifications noted in this certificate are accurate within recognized gemological tolerances. We stand behind our grading with a 4Cs Consumer Guarantee. Kindly see additional details, including the limitation of the guarantee, at www.GCALUSA.com.

GCAL BY SARINE

GCALUSA.com
T +1 212-869-8985
© GCAL USA LLC

Headquarters:
580 Fifth Ave, Flr. 27,
New York, NY 10036

Laboratories:
New York, USA
Surat, INDIA