

# LAB GROWN DIAMOND

**GCAL LG360370451**

February 13, 2026



The fingerprint system for diamonds



**ID No. NY02-783971**

Gemprint is the unique optical fingerprint of your lab grown diamond. This patented technology is positive, forensic identification. Protect your investment and receive discounts up to 10% off your annual insurance premiums.

**Register your diamond at Gemprint.com**

## Laser Inscription

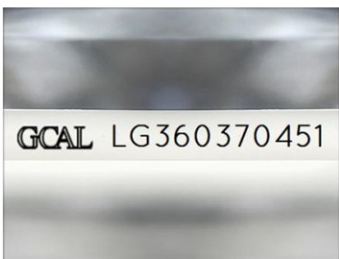
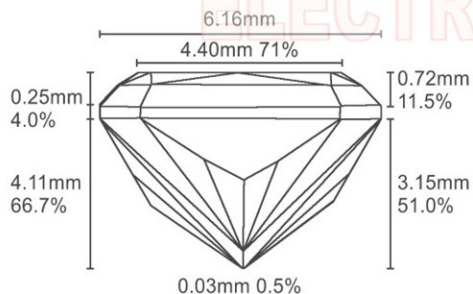


Illustration depicts approx. girdle appearance

## Proportion Diagram



**GCAL Certificate No. LG360370451**

Scan QR code to view details of this lab grown diamond, grading scales, and to download a PDF of this certificate or go to <https://www.gcalusa.com/c/360370451>



## 4C's GRADING

|              |           |
|--------------|-----------|
| Carat Weight | 1.86      |
| Color        | G         |
| Clarity      | VS1       |
| Cut          | Excellent |

|                         |                                      |
|-------------------------|--------------------------------------|
| Shape and Cutting Style | <b>Radiant Brilliant</b>             |
| Measurements            | <b>8.61x6.16x4.11mm</b>              |
| Polish                  | <b>Excellent</b>                     |
| Physical Symmetry       | <b>Very Good</b>                     |
| Optical Brilliance      | <b>Excellent</b>                     |
| Optical Symmetry        | <b>Very Good</b>                     |
| Table %                 | <b>71%</b>                           |
| Depth %                 | <b>66.7%</b>                         |
| Girdle                  | <b>Sl.Thick</b>                      |
| Culet                   | <b>None</b>                          |
| Fluorescence            | <b>None</b>                          |
| Inscription             | <b>GCAL Logo &amp; "LG360370451"</b> |
| Growth Method           | <b>CVD</b>                           |

This laboratory grown diamond was created by the CVD (Chemical Vapor Deposition) method, and has the same chemical, physical and optical properties as a mined diamond.

## Clarity Characteristics and Locations

|                 |          |
|-----------------|----------|
| Crystal, Clouds | Table    |
| Feather         | Pavilion |



The specifications noted in this certificate are accurate within recognized gemological tolerances. We stand behind our grading with a 4Cs Consumer Guarantee. Kindly see additional details, including the limitation of the guarantee, at [www.GCALUSA.com](http://www.GCALUSA.com).

### GCAL BY SARINE

GCALUSA.com  
T +1 212-869-8985  
© GCAL USA LLC

Headquarters:  
580 Fifth Ave, Flr. 27,  
New York, NY 10036

Laboratories:  
New York, USA  
Surat, INDIA