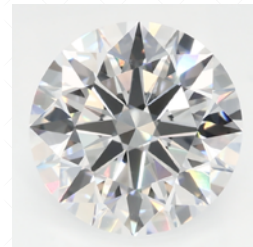


# LAB GROWN DIAMOND


**GICAL LG353526225**

January 03, 2026



## 4Cs GRADING

Carat Weight **2.06**  
Color **E**  
Clarity **VVS2**  
Cut ****

Certificate No **GICAL LG353526225**  
Identification **Lab Grown Diamond**  
Shape and Cutting Style **Round Brilliant**  
Measurements **8.12 - 8.17 x 5.03 mm**  
Fluorescence **None**  
Girdle **Medium to Sl. Thick, Faceted**  
Culet **None**  
Inscription **GICAL  LG353526225 & LAB GROWN**  
Growth Method **CVD**

GICAL has examined this lab grown diamond and certifies that the specifications noted in this document are accurate within recognized gemological tolerances. GICAL is an independent third-party and stands behind our grading with a 4Cs Consumer Guarantee. The guarantee, grading scales and all images unique to this lab grown diamond are available at GICALUSA.com



**GICAL BY SARINE**

GICALUSA.com T+1 212-869-8985

Headquarters 580 fifth Ave, Flr. 27  
New York, NY 10036  
Laboratories New York, USA  
Surat, INDIA

This laboratory grown diamond was created by the CVD (Chemical Vapor Deposition) method, and has the same chemical, physical and optical properties as a mined diamond. This diamond is Type IIa.



Gemprint is the unique optical fingerprint of your lab grown diamond. This patented technology is positive, forensic identification.

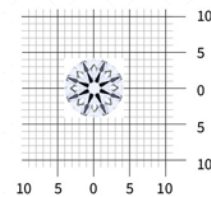
Protect your investment by registering your lab grown diamond and receive discounts up to 10% off your annual insurance premiums. **Register your diamond at Gemprint.com**

## Laser Inscription



Illustration depicts approx. girdle appearance

## Actual Size



8.12 - 8.17 x 5.03 millimeters (mm)

## Photomicrographs

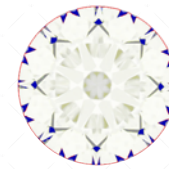


Actual photographs of the crown and pavilion of this lab grown diamond. View hi-resolution photos at GICALUSA.com

## Clarity Characteristics and Locations

Clouds Bezel, Lower Girdle  
Pinpoints Star

**** is the ultimate achievement in precision diamond cutting. Only extraordinarily brilliant and beautiful diamonds achieve **EXCELLENT** grades in all **EIGHT** aspects of CUT quality assessment.



## Optical Brilliance

is the overall return of white light to the viewer. It is measured to the thousandth decimal place and is represented in this image. The white areas indicate light return / brilliance, and the dark-blue areas indicate light loss.



## Fire

results when white light travels through a diamond and is dispersed into its rainbow of spectral colors. These flashes of color contribute to sparkle and are best viewed as the diamond moves.



## Scintillation

is the flashes of white light, or sparkle, produced when light is reflected from a diamond as it moves. This image shows the light returned from a single beam of light when your lab grown diamond is rotated in nine positions.



## Optical Symmetry


is visualized in this photograph of your lab grown diamond taken in a specific colored lighting environment. The evenness of the pattern illustrates the precision and uniformity of facet shapes and alignment.



## Hearts & Arrows

Precision faceting is visualized as Hearts & Arrows when round brilliant cut diamonds are viewed in specific lighting conditions. Each pattern is the result of superior facet placement and exact alignment.

**GICAL LG353526225 RB 2.06 E VVS2 **

Scan QR code to view photos and videos of this lab grown diamond, and the **** grading scales, go to <https://www.gicalusa.com/c/353526225>



### 1. Polish

P Poor F Fair G Good VG Very Good **EX Excellent**

### 2. External Symmetry

P Poor F Fair G Good VG Very Good **EX Excellent**

### 3. Proportions

P Poor F Fair G Good VG Very Good **EX Excellent**

### 4. Optical Brilliance

P Poor F Fair G Good VG Very Good **EX Excellent**

### 5. Fire

P Poor F Fair G Good VG Very Good **EX Excellent**

### 6. Scintillation

P Poor F Fair G Good VG Very Good **EX Excellent**

### 7. Optical Symmetry

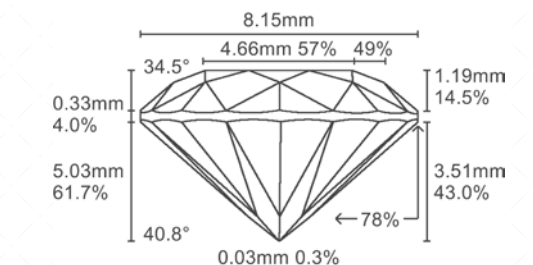
P Poor F Fair G Good VG Very Good **EX Excellent**

### 8. Hearts & Arrows

P Poor F Fair G Good VG Very Good **EX Excellent**

## Proportion Diagram

Optical scanning technology measures each facet and angle to produce an accurate, to-scale diagram of this lab grown diamond.



**DIAMOND SHAPES**



**CARAT WEIGHT SIZES**

|              |        |        |        |        |        |        |
|--------------|--------|--------|--------|--------|--------|--------|
| Carat Weight | 2.50   | 2.00   | 1.50   | 1.00   | 0.75   | 0.50   |
| Approx. Size |        |        |        |        |        |        |
| Diameter     | 8.60mm | 8.00mm | 7.30mm | 6.40mm | 5.80mm | 5.10mm |

**DIAMOND CLARITY GRADING SCALE**

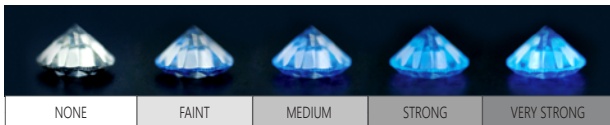
|                          |    |                    |      |                                 |     |                   |     |                |    |    |
|--------------------------|----|--------------------|------|---------------------------------|-----|-------------------|-----|----------------|----|----|
| FL                       | IF | VVS1               | VVS2 | VS1                             | VS2 | S11               | S12 | I1             | I2 | I3 |
| FLAWLESS - INTERNALLY FL |    | VERY VERY SLIGHTLY |      | INCLUDED/VERY SLIGHTLY INCLUDED |     | SLIGHTLY INCLUDED |     | INCLUDED/PIQUE |    |    |

**DIAMOND COLOR GRADING SCALE**



D - Z DIAMOND COLOR GRADING SCALE

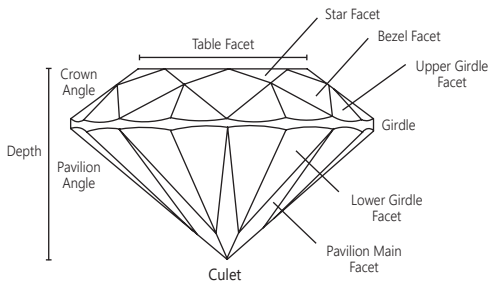
**DIAMOND FLUORESCENCE GRADING SCALE**



**DIAMOND POLISH & SYMMETRY GRADING SCALE**

|           |           |      |      |      |
|-----------|-----------|------|------|------|
| EXCELLENT | VERY GOOD | GOOD | FAIR | POOR |
|-----------|-----------|------|------|------|

**BRILLIANT CUT DIAGRAM**



**BUY WITH CONFIDENCE**

**GCAL BY SARINE™ 4Cs GRADING GUARANTEE**

The GCAL by Sarine™ philosophy is simple: we believe consumers should feel confident about their lab grown diamond purchase, in the same way we believe experts should be accountable and stand behind their work.

This is why your lab grown diamond is protected by a zero tolerance, money-backed grading guarantee. You should know that the GCAL by Sarine™ 4Cs Grading Certificate is the only 4Cs grading certificate in the world that comes with a guarantee that ensures the accuracy of the certified lab grown diamonds' weight and quality grades. If the carat weight or any of the cut, color, or clarity grades provided in this GCAL by Sarine™ 4Cs Grading Certificate is lower than the weight or quality grade of your certified lab grown diamond, GCAL by Sarine™ will reimburse you the difference between what you paid for the lab grown diamond and the current fair value of an equivalent lab grown diamond in the market in which it was purchased, pursuant to the newly established grades. Kindly see additional details, including the limitations of the guarantee, at GCALUSA.com.

**MISSION STATEMENT**

To provide the most accurate and consistent gemological grading, with uncompromising integrity and unparalleled customer service.

**GEMPRINT®**

Having a traceable, unique "fingerprint" of your lab grown diamond adds future protection to your investment, as well as peace of mind. GCAL by Sarine™ records the distinctive Gemprint of every diamond we certify. This patented technology for positive identification is recognized worldwide as forensic evidence and identification. Register your lab grown diamond at GEMPRINT.com

**CERTIFICATE VERIFICATION**

You can verify the authenticity of this certificate by entering your GCAL by Sarine™ Certificate Number at GCALUSA.com. You can also download a complimentary digital copy of this document to send to your insurance company.



**GUARANTEED CERTIFICATE**



**LAB GROWN**



8X® is the highest achievement in precision diamond cutting. The GCAL 8X Ultimate Diamond Cut Grading System encompasses all aspects of diamond CUT quality assessment. Your lab Grown diamond has achieved grades of Excellent in all eight aspects of CUT quality assessment. As a result, this lab grown diamond is recognized for its extraordinary brilliance and beauty.

**PHYSICAL EXCELLENCE**

The first three of the 8X grading factors analyze the exactness of the physical surface, the facet shapes, as well as the angles. This includes the Polish, External Symmetry and Proportions.

Decades of the meticulous mathematical calculations have determined the narrow proportions ranges required to produce superior cut diamonds. Each shape has been studied individually to find the most aesthetically pleasing parameters. Some of the factors considered are listed below.

To view the proportions specifications for each shape, please visit our website GCALUSA.COM

|                       |                           |
|-----------------------|---------------------------|
| Table %               | Lower Girdle facet Length |
| Depth %               | Star Length               |
| Crown Angle/Height    | Girdle Thickness          |
| Pavilion Angle/Height | Culet Size                |

**LIGHT PERFORMANCE EXCELLENCE**

The next three of the 8X grading factors are Brilliance, Fire and Scintillation, which analyze the light handling ability of your lab grown diamond. The combination of these factors is the essence of what makes any diamond visibly shine, dance and sparkle from across a room. Fire and Scintillation are graded while the diamond is in motion and interacting with the light. View the Fire and Scintillation videos of this lab grown diamond at the GCALUSA.com or by scanning the QR code on this certificate.

**OPTICAL EXCELLENCE**

The last two 8X grading factors consider optical excellence. These factors scrutinize the craftsmanship, the precise alignment of the crown and the pavilion facets, the shape outline, and the length to width ratio, ensuring the lab grown diamond achieves aesthetic perfection.

Grading scales for each of the 8X grading factors can be viewed at GCALUSA.com

Independently Graded and Guaranteed by GCAL by Sarine™