

# LAB GROWN DIAMOND

GCAL LG352470183

September 05, 2025



The fingerprint system for diamonds



ID No. NY02-766350

Gemprint is the unique optical fingerprint of your lab grown diamond. This patented technology is positive, forensic identification. Protect your investment and receive discounts up to 10% off your annual insurance premiums.

Register your diamond at [Gemprint.com](https://www.gemprint.com)

## Laser Inscription

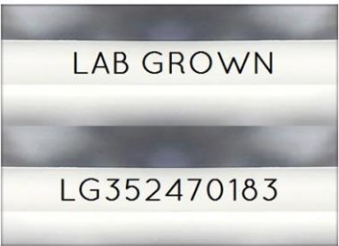
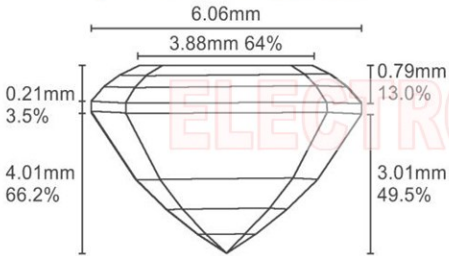


Illustration depicts approx. girdle appearance

## Proportion Diagram



*Certified*  
**SUSTAINABILITY RATED DIAMOND**  
SCS GLOBAL SERVICES

All certified diamonds come with an individual certificate, ONLY available at an accredited retailer.

FOR THE SUSTAINABILITY  
RATED CERTIFICATE SCAN HERE



The specifications noted in this certificate are accurate within recognized gemological tolerances. We stand behind our grading with a 4Cs Consumer Guarantee. Kindly see additional details, including the limitation of the guarantee, at [www.GCALUSA.com](https://www.GCALUSA.com).

### GCAL BY SARINE

GCALUSA.com  
T +1 212-869-8985  
© GCAL USA LLC

Headquarters:  
580 Fifth Ave, Flr. 27,  
New York, NY 10036

Laboratories:  
New York, USA  
Surat, INDIA

## GCAL Certificate No. LG352470183

Scan QR code to view details of this lab grown diamond, grading scales, and to download a PDF of this certificate or go to <https://www.gcalusa.com/c/352470183>



## 4C's GRADING

|              |           |
|--------------|-----------|
| Carat Weight | 2.07      |
| Color        | E         |
| Clarity      | VS1       |
| Cut          | Excellent |

|                         |  |
|-------------------------|--|
| Shape and Cutting Style | <b>Emerald Step</b>                    |
| Measurements            | <b>8.85x6.06x4.01mm</b>                |
| Polish                  | <b>Excellent</b>                       |
| Physical Symmetry       | <b>Very Good</b>                       |
| Optical Brilliance      | <b>Very Good</b>                       |
| Optical Symmetry        | <b>Very Good</b>                       |
| Table %                 | <b>64%</b>                             |
| Depth %                 | <b>66.2%</b>                           |
| Girdle                  | <b>Medium - Sl.Thick</b>               |
| Culet                   | <b>None</b>                            |
| Fluorescence            | <b>None</b>                            |
| Inscription             | <b>"LAB GROWN" &amp; "LG352470183"</b> |
| Growth Method           | <b>CVD</b>                             |

This laboratory grown diamond was created by the CVD (Chemical Vapor Deposition) method, and has the same chemical, physical and optical properties as a mined diamond.

Clarity Characteristics and Locations  
Crystals                      Table