

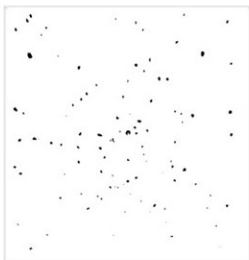
LAB GROWN DIAMOND

GCAL LG352190177

August 29, 2025



The fingerprint system for diamonds



ID No. NY02-762032

Gemprint is the unique optical fingerprint of your lab grown diamond. This patented technology is positive, forensic identification. Protect your investment and receive discounts up to 10% off your annual insurance premiums.

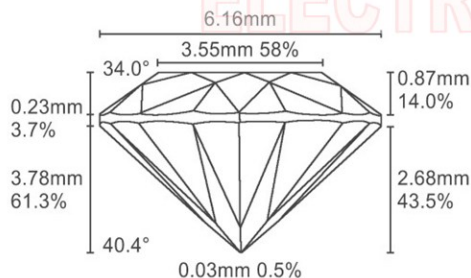
Register your diamond at [Gemprint.com](https://www.gemprint.com)

Laser Inscription



Illustration depicts approx. girdle appearance

Proportion Diagram



GCAL Certificate No. LG352190177

Scan QR code to view details of this lab grown diamond, grading scales, and to download a PDF of this certificate or go to <https://www.gcalusa.com/c/352190177>



4C's GRADING

| | |
|--------------|-----------|
| Carat Weight | 1.28 |
| Color | F |
| Clarity | VS1 |
| Cut | Excellent |

| | |
|-------------------------|--|
| Shape and Cutting Style | Pear Brilliant |
| Measurements | 9.53x6.16x3.78mm |
| Polish | Very Good |
| Physical Symmetry | Excellent |
| Optical Brilliance | Excellent |
| Optical Symmetry | Excellent |
| Table % | 58% |
| Depth % | 61.3% |
| Girdle | Medium - Sl.Thick, Faceted |
| Culet | None |
| Fluorescence | None |
| Inscription | "LAB GROWN" & "LG352190177" |
| Growth Method | CVD |

This laboratory grown diamond was created by the CVD (Chemical Vapor Deposition) method, and has the same chemical, physical and optical properties as a mined diamond.

Clarity Characteristics and Locations

| | |
|----------|--------------------|
| Crystals | Upper Girdle, Star |
| Clouds | Bezel, Table |



The specifications noted in this certificate are accurate within recognized gemological tolerances. We stand behind our grading with a 4Cs Consumer Guarantee. Kindly see additional details, including the limitation of the guarantee, at [www.GCALUSA.com](https://www.gcalusa.com).

GCAL BY SARINE

GCALUSA.com
T +1 212-869-8985
© GCAL USA LLC

Headquarters:
580 Fifth Ave, Flr. 27,
New York, NY 10036

Laboratories:
New York, USA
Surat, INDIA