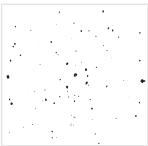


# LAB GROWN DIAMOND

GCAL LG351276290

May 17, 2025



The fingerprint system for diamonds®

ID No. GCS1-42688

Gemprint is the unique optical fingerprint of your lab grown diamond. This patented technology is positive, forensic identification. Protect your investment and receive discounts up to 10% off your annual insurance premiums.

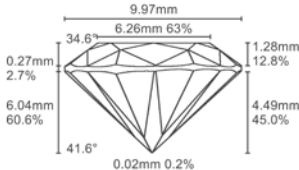
Register your diamond at [Gemprint.com](https://www.gcalusa.com/c/351276290)

## Laser Inscription



Illustration depicts approx. girdle appearance

## Proportion Diagram



All certified diamonds come with an individual certificate, ONLY available at an accredited retailer.

← FOR THE SUSTAINABILITY RATED CERTIFICATE SCAN HERE



*Certified*  
SUSTAINABILITY RATED DIAMOND  
SCS GLOBAL SERVICES



The specifications noted in this certificate are accurate within recognized gemological tolerances. We stand behind our grading with a 4Cs Consumer Guarantee. Kindly see additional details, including the limitation of the guarantee, at [www.gcalusa.com](https://www.gcalusa.com).

### GCAL BY SARINE

GCALUSA.com  
T +1 212-869-8985  
© GCAL USA LLC

Headquarters:  
580 fifth Ave, Flr. 27  
New York, NY 10036

Laboratories:  
New York, USA  
Surat, INDIA

## GCAL by Sarine Certificate Number LG351276290

Scan QR code to view details of this lab grown diamond, grading scales, and to download a PDF of this certificate or go to <https://www.gcalusa.com/c/351276290>



## 4Cs GRADING

Carat Weight	<b>4.06</b>
Color	<b>E</b>
Clarity	<b>VS1</b>
Cut	<b>Excellent</b>

### Shape and Cutting Style

**Cushion Brilliant**

### Measurements

**10.25 x 9.97 x 6.04 mm**

### Polish

**Excellent**

### Physical Symmetry

**Excellent**

### Optical Brilliance

**Excellent**

### Optical Symmetry

**Very Good**

### Table %

**63%**

### Depth %

**60.6%**

### Girdle

**Medium to Sl. Thick, Faceted**

### Culet

**None**

### Fluorescence

**None**

### Inscription

**GCAL LG351276290**

### Growth Method

**CVD**

This lab grown diamond was created by the CVD (Chemical Vapor Deposition) method, and has the same chemical, physical and optical properties as a mined diamond.

### Clarity Characteristics and Locations

Crystals, Pinpoints  
Feathers

Table  
Lower Girdle, Girdle

GCAL LG351276290  
LAB GROWN DIAMOND  
May 17, 2025



Carat Weight	<b>4.06</b>
Color	<b>E</b>
Clarity	<b>VS1</b>
Cut	<b>Excellent</b>

### Shape

**Cushion Brill**

### Measurements

**10.25 x 9.97 x 6.04**

### Polish

**Excellent**

### Physical Symmetry

**Excellent**

### Optical Brilliance

**Excellent**

### Optical Symmetry

**Very Good**

### Table %

**63%**

### Depth %

**60.6%**

### Girdle

**MED - STK**

### Girdle Condition

**Faceted**

### Culet

**None**

### Fluorescence

**None**

### Inscription

**GCAL LG351276290**

### Growth Method

**CVD**





## BUY WITH CONFIDENCE

### GCAL BY SARINE™ 4Cs GRADING GUARANTEE

The GCAL by Sarine™ philosophy is simple: we believe consumers should feel confident about their lab grown diamond purchase, in the same way we believe experts should be accountable and stand behind their

This is why your lab grown diamond is protected by a zero tolerance, money-backed grading guarantee. You should know that the GCAL by Sarine™ 4Cs Grading Certificate is the only 4Cs grading certificate in the world that comes with a guarantee that ensures the accuracy of the certified lab grown diamonds' weight and quality grades. If the carat weight or any of the cut, color, or clarity grades provided in this GCAL by Sarine™ 4Cs Grading Certificate is lower than the weight or quality grade of your certified lab grown diamond, GCAL by Sarine™ will reimburse you the difference between what you paid for the lab grown diamond and the current fair value of an equivalent lab grown diamond in the market in which it was purchased, pursuant to the newly-established grades. Kindly see additional details, including the limitations of the guarantee, at <https://www.gcalusa.com>.

### GEMPRINT®

Having a traceable, unique "fingerprint" of your lab grown diamond adds peace of mind. GCAL by Sarine™ records the distinctive Gemprint pattern of every diamond we certify. The Gemprint patented technology for positive identification is widely recognized as forensic evidence and identification. Register your lab grown diamond at <https://www.gemprint.com>.

### CERTIFICATE VERIFICATION

You can verify the authenticity of this certificate by entering your GCAL by Sarine™ Certificate Number at <https://www.gcalusa.com>. You can also download a complimentary digital copy of this document to send to your insurance company.

### DIAMOND SHAPES



### CARAT WEIGHT SIZES



### DIAMOND CLARITY GRADING SCALE

FL	IF	VVS1	VVS2	VS1	VS2	S11	S12	I1	I2	I3
FLAWLESS - INTERNALLY FL	VERY VERY SLIGHTLY INCLUDED	VERY SLIGHTLY INCLUDED	VERY SLIGHTLY INCLUDED	VERY SLIGHTLY INCLUDED	VERY SLIGHTLY INCLUDED	VERY SLIGHTLY INCLUDED	VERY SLIGHTLY INCLUDED	VERY SLIGHTLY INCLUDED	VERY SLIGHTLY INCLUDED	VERY SLIGHTLY INCLUDED

### DIAMOND COLOR GRADING SCALE



### FLUORESCENCE GRADING SCALE



### POLISH & SYMMETRY GRADING SCALE

EXCELLENT	VERY GOOD	GOOD	FAIR	POOR
-----------	-----------	------	------	------

### BRILLIANT CUT DIAGRAM



# GUARANTEED CERTIFICATE

## LAB GROWN DIAMOND

Independently Graded and Guaranteed by GCAL by Sarine™