

# LAB GROWN DIAMOND

**GCAL LG350280332**

February 03, 2025



*The fingerprint system for diamonds*

**ID No. NY02-734368**

Gemprint is the unique optical fingerprint of your lab grown diamond. This patented technology is positive, forensic identification. Protect your investment and receive discounts up to 10% off your annual insurance premiums.

**Register your diamond at [Gemprint.com](https://www.gemprint.com)**

## Laser Inscription

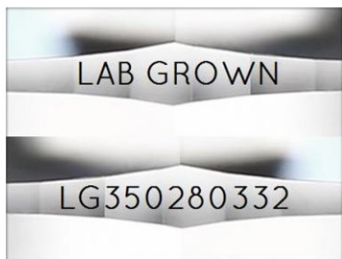
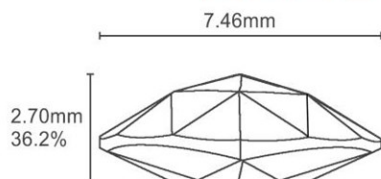


Illustration depicts approx. girdle appearance

## Proportion Diagram



**GCAL Certificate No. LG350280332**

Scan QR code to view details of this lab grown diamond, grading scales, and to download a PDF of this certificate or go to <https://www.gcalusa.com/c/350280332>



## 4C's GRADING

Carat Weight	2.08
Color	E
Clarity	VS1
Cut	N/A

Shape and Cutting Style

**Marquise Rose Cut**

Measurements

**14.81x7.46x2.70mm**

Polish

**Excellent**

Physical Symmetry

**Excellent**

Girdle

**Sl.Thick - Thick, Faceted**

Culet

**N/A**

Fluorescence

**None**

Inscription

**"LAB GROWN" & "LG350280332"**

Growth Method

**CVD**

This laboratory grown diamond was created by the CVD (Chemical Vapor Deposition) method, and has the same chemical, physical and optical properties as a mined diamond.

Clarity Characteristics and Locations

Cloud, Feather

Pavilion Girdle



The specifications noted in this certificate are accurate within recognized gemological tolerances. We stand behind our grading with a 4Cs Consumer Guarantee. Kindly see additional details, including the limitation of the guarantee, at [www.GCALUSA.com](https://www.GCALUSA.com).

**GCAL BY SARINE**

GCALUSA.com  
T +1 212-869-8985  
© GCAL USA LLC

Headquarters:  
580 Fifth Ave, Flr. 27,  
New York, NY 10036

Laboratories:  
New York, USA  
Surat, INDIA