

LAB GROWN DIAMOND

GCAL LG350280328

January 31, 2025



The fingerprint system for diamonds



ID No. NY02-734335

Gemprint is the unique optical fingerprint of your lab grown diamond. This patented technology is positive, forensic identification. Protect your investment and receive discounts up to 10% off your annual insurance premiums.

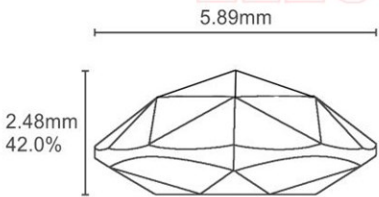
Register your diamond at [Gemprint.com](https://www.gemprint.com)

Laser Inscription



Illustration depicts approx. girdle appearance

Proportion Diagram



GCAL Certificate No. LG350280328

Scan QR code to view details of this lab grown diamond, grading scales, and to download a PDF of this certificate or go to <https://www.gcalusa.com/c/350280328>



4C's GRADING

| | |
|--------------|------|
| Carat Weight | 1.02 |
| Color | E |
| Clarity | VVS2 |
| Cut | N/A |

| | |
|-------------------------|--------------------------------|
| Shape and Cutting Style | Pear Rose Cut |
| Measurements | 9.37x5.89x2.48mm |
| Polish | Excellent |
| Physical Symmetry | Excellent |
| Girdle | Sl.Thick - Very Thick, Faceted |
| Culet | N/A |
| Fluorescence | None |
| Inscription | "LAB GROWN" & "LG350280328" |
| Growth Method | CVD |

ELECTRONIC COPY



The specifications noted in this certificate are accurate within recognized gemological tolerances. We stand behind our grading with a 4Cs Consumer Guarantee. Kindly see additional details, including the limitation of the guarantee, at www.GCALUSA.com.

GCAL BY SARINE

GCALUSA.com
T +1 212-869-8985
© GCAL USA LLC

Headquarters:
580 Fifth Ave, Flr. 27,
New York, NY 10036

Laboratories:
New York, USA
Surat, INDIA

This laboratory grown diamond was created by the CVD (Chemical Vapor Deposition) method, and has the same chemical, physical and optical properties as a mined diamond.

Clarity Characteristics and Locations

| | |
|----------|--------|
| Clouds | Crown |
| Feathers | Girdle |