

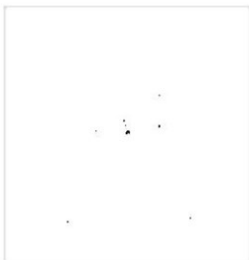
# LAB GROWN DIAMOND

**GCAL LG350280296**

January 31, 2025



The fingerprint system for diamonds



**ID No. NY02-734293**

Gemprint is the unique optical fingerprint of your lab grown diamond. This patented technology is positive, forensic identification. Protect your investment and receive discounts up to 10% off your annual insurance premiums.

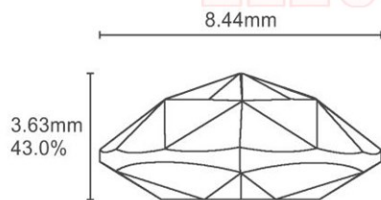
**Register your diamond at Gemprint.com**

## Laser Inscription



Illustration depicts approx. girdle appearance

## Proportion Diagram



**GCAL Certificate No. LG350280296**

Scan QR code to view details of this lab grown diamond, grading scales, and to download a PDF of this certificate or go to <https://www.gcalusa.com/c/350280296>



## 4C's GRADING

Carat Weight	3.08
Color	D
Clarity	VVS2
Cut	N/A

Shape and Cutting Style	<b>Pear Rose Cut</b>
Measurements	<b>13.48x8.44x3.63mm</b>
Polish	<b>Excellent</b>
Physical Symmetry	<b>Excellent</b>
Girdle	<b>Thick - Very Thick, Faceted</b>
Culet	<b>N/A</b>
Fluorescence	<b>None</b>
Inscription	<b>"LAB GROWN" &amp; "LG350280296"</b>
Growth Method	<b>CVD</b>



The specifications noted in this certificate are accurate within recognized gemological tolerances. We stand behind our grading with a 4Cs Consumer Guarantee. Kindly see additional details, including the limitation of the guarantee, at [www.GCALUSA.com](http://www.GCALUSA.com).

### GCAL BY SARINE

GCALUSA.com  
T +1 212-869-8985  
© GCAL USA LLC

Headquarters:  
580 Fifth Ave, Flr. 27,  
New York, NY 10036

Laboratories:  
New York, USA  
Surat, INDIA

This laboratory grown diamond was created by the CVD (Chemical Vapor Deposition) method, and has the same chemical, physical and optical properties as a mined diamond.

### Clarity Characteristics and Locations

Pinpoint, Feathers

Crown