

LAB GROWN DIAMOND

GCAL LG343346125

December 3, 2024

IDENTIFICATION DATA



ID No. GCS1-18073

Gemprint is the unique optical fingerprint of your lab grown diamond. This patented technology is positive, forensic identification. Protect your investment and receive discounts up to 10% off your annual insurance premiums. Register your diamond at [Gemprint.com](https://www.gemprint.com)

Laser Inscription

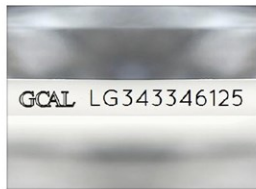
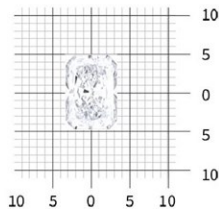


Illustration depicts approx. girdle appearance

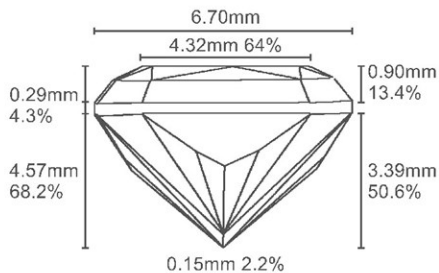
Actual Size



9.65 x 6.70 x 4.57 millimeters (mm)

Proportion Diagram

Optical scanning technology measures each facet and angle to produce an accurate, to-scale diagram of this lab grown diamond.



Certified
SUSTAINABILITY RATED DIAMOND
SCS GLOBAL SERVICES

All certified diamonds come with an individual certificate, ONLY available at an accredited retailer.
FOR THE SUSTAINABILITY RATED CERTIFICATE SCAN HERE



PHOTOMICROGRAPHS



Actual photographs of the crown (top) and pavilion (bottom) of this lab grown diamond photographed at magnifications up to 10x. View hi-res photos at <https://www.gcalusa.com/c/343346125>

Clarity Characteristics and Locations

Crystals
Pinpoints
Table, Crown Corner
Table

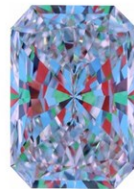
LIGHT PERFORMANCE PROFILE



Optical Brilliance

Excellent

Optical Brilliance is the overall return of white light to the viewer. It is measured to the thousandth decimal place and is represented in this image. The white areas indicate light return / brilliance, and the dark blue areas indicate light loss.



Optical Symmetry

Excellent

Optical Symmetry is visualized in this photograph of your lab grown diamond taken in a specific colored lighting environment. The evenness of the pattern illustrates the precision and uniformity of facet shapes and alignment.

JEWELRY



14 Karat Yellow Gold Engagement Ring

Lab Grown Side Diamonds
Shapes
Total Quantity
Approx. Total Weight
Average Color Range
Average Clarity Range
Round Full Cut
Fifteen (15)
0.14 carat
F-G
VS1-VS2



GCAL Certificate No. LG343346125

Scan QR code to view photos of this lab grown diamond, grading scales, and to download a PDF of this certificate or go to <https://www.gcalusa.com/c/343346125>



4C's GRADING

Carat Weight
Color
Clarity
Cut
2.52
E
VS1
Ideal

Shape and Cutting Style
Measurements
Polish
Physical Symmetry
Optical Brilliance
Optical Symmetry
Table %
Depth %
Girdle
Culet
Fluorescence
Inscription
Growth Method
Radiant Brilliant
9.65x6.70x4.57
Excellent
Excellent
Excellent
Excellent
64%
68.2%
SI.Thick to Thick
None
None
GCAL Logo & "LG343346125"
CVD

This laboratory grown diamond was created by the CVD (Chemical Vapor Deposition) method, and has the same chemical, physical and optical properties as a mined diamond.

GCAL has examined this lab grown diamond and certifies that the specifications noted in this document are accurate within recognized gemological tolerances. GCAL is an independent third-party and stands behind our grading with a 4Cs Consumer Guarantee. The guarantee, grading scales and all images unique to this lab grown diamond are available at [GCALUSA.com](https://www.gcalusa.com).



GCAL BY SARINE
ISO 17025 Accredited Forensic Laboratory
580 Fifth Ave, Flr 27
New York, NY 10036
T 212-869-8985
GCALUSA.com



ISO/IEC 17025 2017
ANAB L2177-1 Accredited Testing Lab