

# LAB GROWN DIAMOND

**GCAL LG342006191**

August 01, 2024



The fingerprint system for diamonds



**ID No. GCS1-8213**

Gemprint is the unique optical fingerprint of your lab grown diamond. This patented technology is positive, forensic identification. Protect your investment and receive discounts up to 10% off your annual insurance premiums.

**Register your diamond at Gemprint.com**

## Laser Inscription

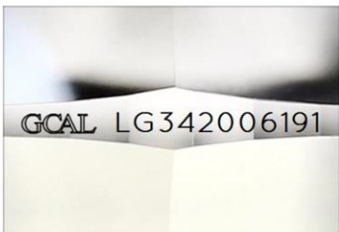


Illustration depicts approx. girdle appearance

## Proportion Diagram



**GCAL Certificate No. LG342006191**

Scan QR code to view details of this lab grown diamond, grading scales, and to download a PDF of this certificate or go to <https://www.gcalusa.com/c/342006191>



## 4C's GRADING

Carat Weight	1.30
Color	E
Clarity	VVS1
Cut	Excellent

Shape and Cutting Style

**Cushion Modified Brilliant**

Measurements

**6.30x6.01x3.89mm**

Polish

**Excellent**

Physical Symmetry

**Excellent**

Optical Brilliance

**Excellent**

Optical Symmetry

**Very Good**

Table %

**59%**

Depth %

**64.7%**

Girdle

**Sl.Thick - Thick, Faceted**

Culet

**None**

Fluorescence

**None**

Inscription

**GCAL Logo & "LG342006191"**

Growth Method

**HPHT**

This laboratory grown diamond was created by the HPHT (High Pressure High Temperature) method, and has the same chemical, physical and optical properties as a mined diamond.

Clarity Characteristics and Locations

Cloud

Pavilion Main



The specifications noted in this certificate are accurate within recognized gemological tolerances. We stand behind our grading with a 4Cs Consumer Guarantee. Kindly see additional details, including the limitation of the guarantee, at [www.GCALUSA.com](http://www.GCALUSA.com).

**GCAL BY SARINE**

GCALUSA.com  
T +1 212-869-8985  
© GCAL USA LLC

Headquarters:  
580 Fifth Ave, Flr. 27,  
New York, NY 10036

Laboratories:  
New York, USA  
Surat, INDIA