

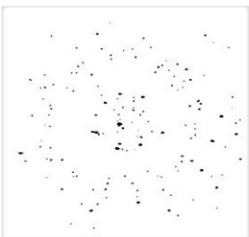
# LAB GROWN DIAMOND

**GCAL LG341986347**

August 05, 2024



The fingerprint system for diamonds



**ID No. GCS1-8153**

Gemprint is the unique optical fingerprint of your lab grown diamond. This patented technology is positive, forensic identification. Protect your investment and receive discounts up to 10% off your annual insurance premiums.

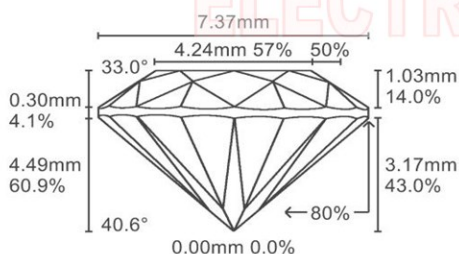
**Register your diamond at Gemprint.com**

## Laser Inscription



Illustration depicts approx. girdle appearance

## Proportion Diagram



**GCAL Certificate No. LG341986347**

Scan QR code to view details of this lab grown diamond, grading scales, and to download a PDF of this certificate or go to <https://www.gcalusa.com/c/341986347>



## 4C's GRADING

|              |           |
|--------------|-----------|
| Carat Weight | 1.51      |
| Color        | F         |
| Clarity      | VS1       |
| Cut          | Excellent |

|                         |                           |
|-------------------------|---------------------------|
| Shape and Cutting Style | Round Brilliant           |
| Measurements            | 7.36-7.39x4.49mm          |
| Polish                  | Excellent                 |
| Physical Symmetry       | Excellent                 |
| Optical Brilliance      | Excellent                 |
| Optical Symmetry        | Very Good                 |
| Table %                 | 57%                       |
| Depth %                 | 60.9%                     |
| Girdle                  | Sl.Thick, Faceted         |
| Culet                   | None                      |
| Fluorescence            | None                      |
| Inscription             | GCAL Logo & "LG341986347" |
| Growth Method           | CVD                       |

This laboratory grown diamond was created by the CVD (Chemical Vapor Deposition) method, and has the same chemical, physical and optical properties as a mined diamond.

### Clarity Characteristics and Locations

|                     |              |
|---------------------|--------------|
| Crystals, Pinpoints | Table        |
| Feather             | Upper Girdle |



The specifications noted in this certificate are accurate within recognized gemological tolerances. We stand behind our grading with a 4Cs Consumer Guarantee. Kindly see additional details, including the limitation of the guarantee, at [www.GCALUSA.com](http://www.GCALUSA.com).

### GCAL BY SARINE

GCALUSA.com  
T +1 212-869-8985  
© GCAL USA LLC

Headquarters:  
580 Fifth Ave, Flr. 27,  
New York, NY 10036

Laboratories:  
New York, USA  
Surat, INDIA