

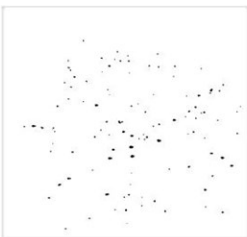
# LAB GROWN DIAMOND

**GCAL LG341986189**

August 05, 2024



The fingerprint system for diamonds



**ID No. GCS1-8073**

Gemprint is the unique optical fingerprint of your lab grown diamond. This patented technology is positive, forensic identification. Protect your investment and receive discounts up to 10% off your annual insurance premiums.

**Register your diamond at Gemprint.com**

## Laser Inscription

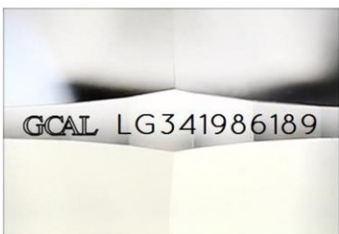
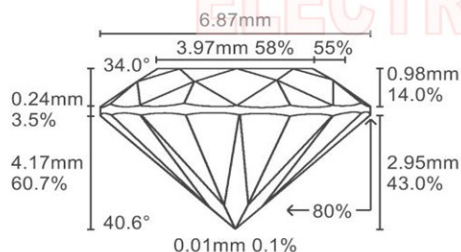


Illustration depicts approx. girdle appearance

## Proportion Diagram



**GCAL Certificate No. LG341986189**

Scan QR code to view details of this lab grown diamond, grading scales, and to download a PDF of this certificate or go to <https://www.gcalusa.com/c/341986189>



## 4C's GRADING

Carat Weight	1.21
Color	D
Clarity	VS2
Cut	Ideal

Shape and Cutting Style

**Round Brilliant**

Measurements

**6.85-6.90x4.17mm**

Polish

**Excellent**

Physical Symmetry

**Excellent**

Optical Brilliance

**Excellent**

Optical Symmetry

**Excellent**

Table %

**58%**

Depth %

**60.7%**

Girdle

**Medium - Sl.Thick, Faceted**

Culet

**None**

Fluorescence

**None**

Inscription

**GCAL Logo & "LG341986189"**

Growth Method

**HPHT**

This laboratory grown diamond was created by the HPHT (High Pressure High Temperature) method, and has the same chemical, physical and optical properties as a mined diamond.

Clarity Characteristics and Locations

Crystal	Star
Feather	Upper Girdle



The specifications noted in this certificate are accurate within recognized gemological tolerances. We stand behind our grading with a 4Cs Consumer Guarantee. Kindly see additional details, including the limitation of the guarantee, at [www.GCALUSA.com](http://www.GCALUSA.com).

**GCAL BY SARINE**

GCALUSA.com  
T +1 212-869-8985  
© GCAL USA LLC

Headquarters:  
580 Fifth Ave, Flr. 27,  
New York, NY 10036

Laboratories:  
New York, USA  
Surat, INDIA