

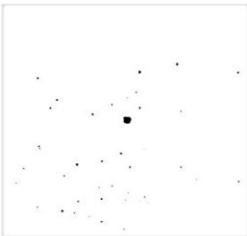
LAB GROWN DIAMOND

GCAL LG341986136

August 05, 2024



The fingerprint system for diamonds



ID No. GCS1-7938

Gemprint is the unique optical fingerprint of your lab grown diamond. This patented technology is positive, forensic identification. Protect your investment and receive discounts up to 10% off your annual insurance premiums.

Register your diamond at [Gemprint.com](https://www.gemprint.com)

Laser Inscription

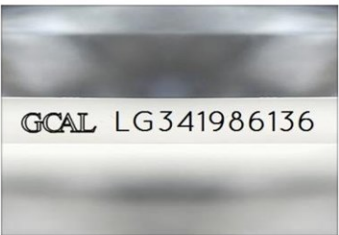


Illustration depicts approx. girdle appearance

Proportion Diagram



GCAL Certificate No. LG341986136

Scan QR code to view details of this lab grown diamond, grading scales, and to download a PDF of this certificate or go to <https://www.gcalusa.com/c/341986136>



4C's GRADING

| | |
|--------------|-------|
| Carat Weight | 3.26 |
| Color | G |
| Clarity | VS1 |
| Cut | Ideal |

| | |
|-------------------------|---------------------------|
| Shape and Cutting Style | Radiant Brilliant |
| Measurements | 9.54x7.45x4.99mm |
| Polish | Excellent |
| Physical Symmetry | Excellent |
| Optical Brilliance | Excellent |
| Optical Symmetry | Excellent |
| Table % | 64% |
| Depth % | 67.0% |
| Girdle | Sl.Thick |
| Culet | None |
| Fluorescence | None |
| Inscription | GCAL Logo & "LG341986136" |
| Growth Method | CVD |

This laboratory grown diamond was created by the CVD (Chemical Vapor Deposition) method, and has the same chemical, physical and optical properties as a mined diamond.

Clarity Characteristics and Locations
Crystal, Pinpoints Table



The specifications noted in this certificate are accurate within recognized gemological tolerances. We stand behind our grading with a 4Cs Consumer Guarantee. Kindly see additional details, including the limitation of the guarantee, at www.gcalusa.com.

GCAL BY SARINE

GCALUSA.com
T +1 212-869-8985
© GCAL USA LLC

Headquarters:
580 Fifth Ave, Flr. 27,
New York, NY 10036

Laboratories:
New York, USA
Surat, INDIA