

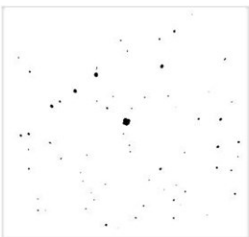
# LAB GROWN DIAMOND

**GCAL LG341986041**

August 05, 2024



The fingerprint system for diamonds



**ID No. GCS1-7967**

Gemprint is the unique optical fingerprint of your lab grown diamond. This patented technology is positive, forensic identification. Protect your investment and receive discounts up to 10% off your annual insurance premiums.

**Register your diamond at Gemprint.com**

## Laser Inscription

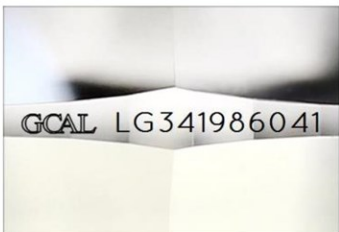


Illustration depicts approx. girdle appearance

## Proportion Diagram



**GCAL Certificate No. LG341986041**

Scan QR code to view details of this lab grown diamond, grading scales, and to download a PDF of this certificate or go to <https://www.gcalusa.com/c/341986041>



## 4C's GRADING

Carat Weight	2.25
Color	G
Clarity	VVS2
Cut	Excellent

Shape and Cutting Style

**Cushion Modified Brilliant**

Measurements

**7.73x7.40x4.83mm**

Polish

**Excellent**

Physical Symmetry

**Very Good**

Optical Brilliance

**Excellent**

Optical Symmetry

**Very Good**

Table %

**63%**

Depth %

**65.3%**

Girdle

**Thick - Very Thick, Faceted**

Culet

**None**

Fluorescence

**None**

Inscription

**GCAL Logo & "LG341986041"**

Growth Method

**CVD**

This laboratory grown diamond was created by the CVD (Chemical Vapor Deposition) method, and has the same chemical, physical and optical properties as a mined diamond.

Clarity Characteristics and Locations

Clouds	Upper Girdle
Pinpoints	Bezel



The specifications noted in this certificate are accurate within recognized gemological tolerances. We stand behind our grading with a 4Cs Consumer Guarantee. Kindly see additional details, including the limitation of the guarantee, at [www.GCALUSA.com](http://www.GCALUSA.com).

**GCAL BY SARINE**

GCALUSA.com  
T +1 212-869-8985  
© GCAL USA LLC

Headquarters:  
580 Fifth Ave, Flr. 27,  
New York, NY 10036

Laboratories:  
New York, USA  
Surat, INDIA