

# LAB GROWN DIAMOND

**GCAL LG341986015**

August 05, 2024



The fingerprint system for diamonds



**ID No. GCS1-7287**

Gemprint is the unique optical fingerprint of your lab grown diamond. This patented technology is positive, forensic identification. Protect your investment and receive discounts up to 10% off your annual insurance premiums.

**Register your diamond at Gemprint.com**

## Laser Inscription

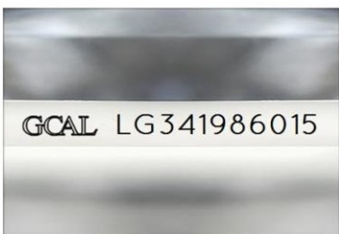
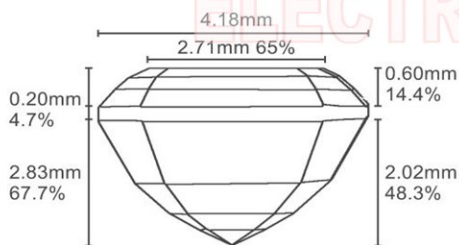


Illustration depicts approx. girdle appearance

## Proportion Diagram



## GCAL Certificate No. LG341986015

Scan QR code to view details of this lab grown diamond, grading scales, and to download a PDF of this certificate or go to <https://www.gcalusa.com/c/341986015>



## 4C's GRADING

Carat Weight	0.71
Color	E
Clarity	VVS2
Cut	Ideal

## Shape and Cutting Style

**Emerald Step**

## Measurements

**5.84x4.18x2.83mm**

## Polish

**Excellent**

## Physical Symmetry

**Excellent**

## Optical Brilliance

**Excellent**

## Optical Symmetry

**Excellent**

## Table %

**65%**

## Depth %

**67.7%**

## Girdle

**Sl.Thick - Thick**

## Culet

**None**

## Fluorescence

**None**

## Inscription

**GCAL Logo & "LG341986015"**

## Growth Method

**HPHT**

This laboratory grown diamond was created by the HPHT (High Pressure High Temperature) method, and has the same chemical, physical and optical properties as a mined diamond.

## Clarity Characteristics and Locations

Pinpoints

Crown Corner,Girdle



The specifications noted in this certificate are accurate within recognized gemological tolerances. We stand behind our grading with a 4Cs Consumer Guarantee. Kindly see additional details, including the limitation of the guarantee, at [www.GCALUSA.com](http://www.GCALUSA.com).

## GCAL BY SARINE

GCALUSA.com  
T +1 212-869-8985  
© GCAL USA LLC

Headquarters:  
580 Fifth Ave, Flr. 27,  
New York, NY 10036

Laboratories:  
New York, USA  
Surat, INDIA