

LAB GROWN DIAMOND

GCAL LG341946237

July 31, 2024



The fingerprint system for diamonds



ID No. GCS1-7223

Gemprint is the unique optical fingerprint of your lab grown diamond. This patented technology is positive, forensic identification. Protect your investment and receive discounts up to 10% off your annual insurance premiums.

Register your diamond at Gemprint.com

Laser Inscription

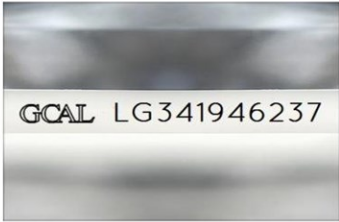
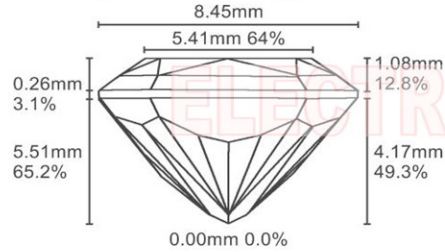


Illustration depicts approx. girdle appearance

Proportion Diagram



All certified diamonds come with an individual certificate, ONLY available at an accredited retailer.

← FOR THE SUSTAINABILITY RATED CERTIFICATE SCAN HERE



Certified
SUSTAINABILITY RATED DIAMOND
SCS GLOBAL SERVICES



The specifications noted in this certificate are accurate within recognized gemological tolerances. We stand behind our grading with a 4Cs Consumer Guarantee. Kindly see additional details, including the limitation of the guarantee, at www.GCALUSA.com.

GCAL BY SARINE

GCALUSA.com
T +1 212-869-8985
© GCAL USA LLC

Headquarters:
580 Fifth Ave, Flr. 27,
New York, NY 10036

Laboratories:
New York, USA
Surat, INDIA

GCAL Certificate No. LG341946237

Scan QR code to view details of this lab grown diamond, grading scales, and to download a PDF of this certificate or go to <https://www.gcalusa.com/c/341946237>



4C's GRADING

Carat Weight	4.10
Color	G
Clarity	VS1
Cut	Excellent

Shape and Cutting Style

Radiant Brilliant

Measurements

11.14x8.45x5.51mm

Polish

Excellent

Physical Symmetry

Excellent

Optical Brilliance

Excellent

Optical Symmetry

Very Good

Table %

64%

Depth %

65.2%

Girdle

Medium

Culet

None

Fluorescence

None

Inscription

GCAL Logo & "LG341946237"

Growth Method

CVD

This laboratory grown diamond was created by the CVD (Chemical Vapor Deposition) method, and has the same chemical, physical and optical properties as a mined diamond.

Clarity Characteristics and Locations

Crystal, Pinpoints

Table, Crown Corner