

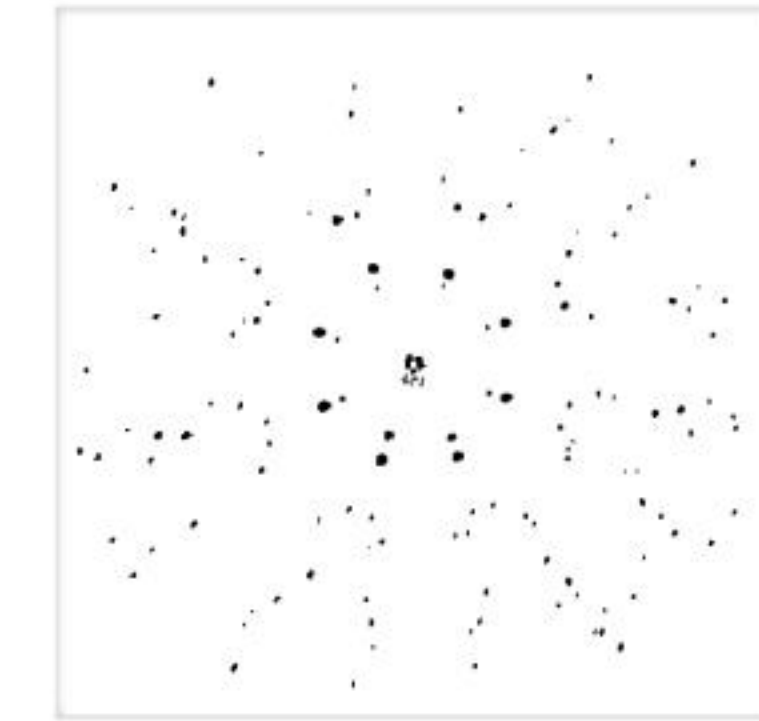
NATURAL DIAMOND

GCAL 341910006

July 10, 2024

IDENTIFICATION DATA

Gemprint  *The fingerprint system for diamonds*



ID No. NY02-695369
Gemprint is the unique optical fingerprint of your diamond. This patented technology is positive, forensic identification. Protect your investment and receive discounts up to 10% off your annual insurance premiums. Register your diamond at [Gemprint.com](https://www.gemprint.com)

Laser Inscription

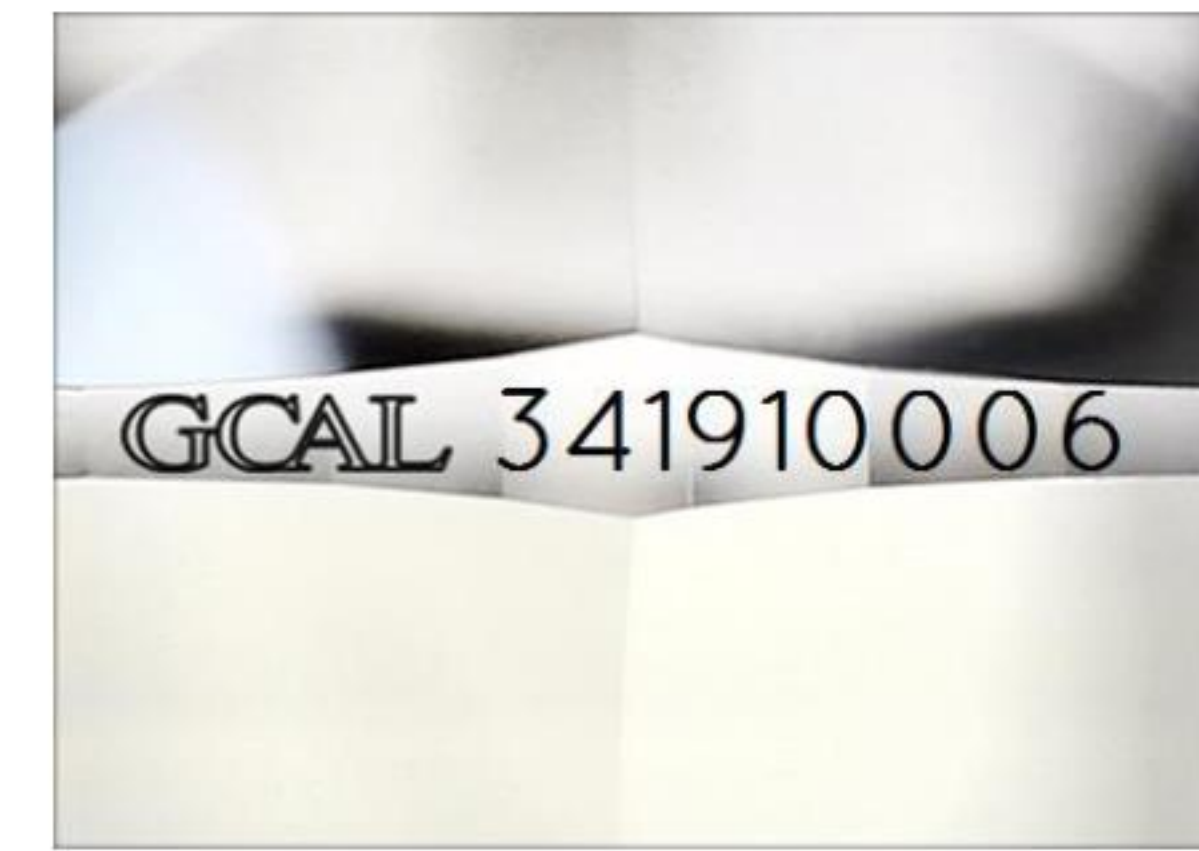
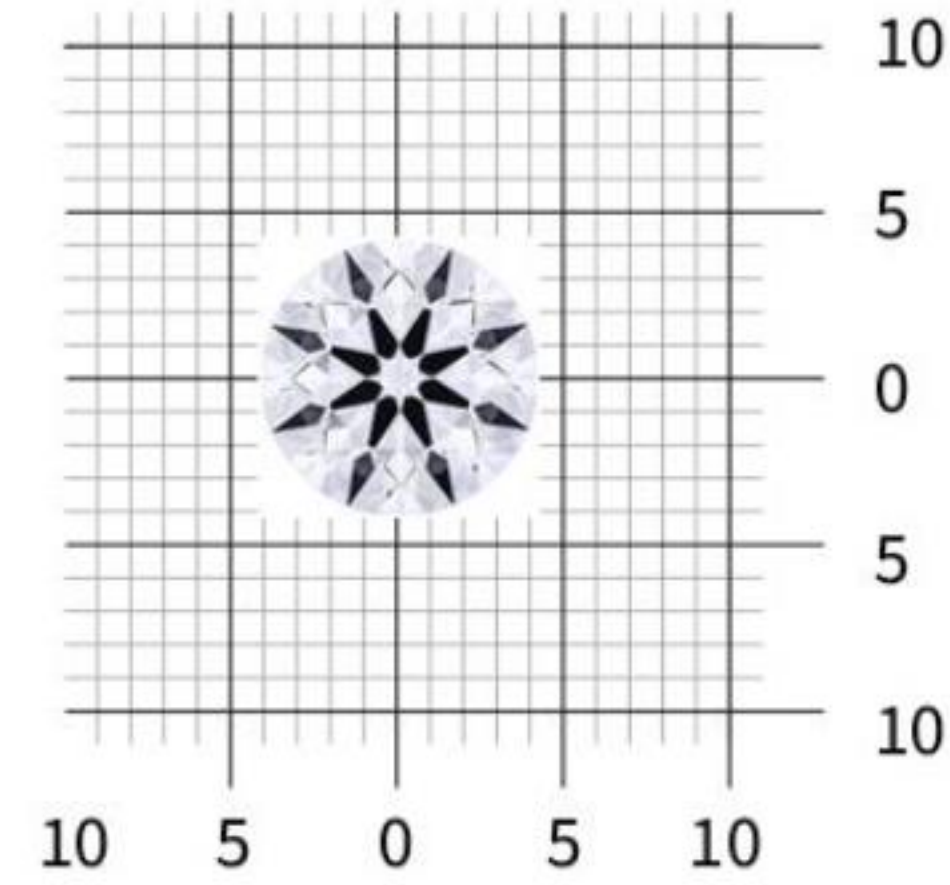


Illustration depicts approx. girdle appearance

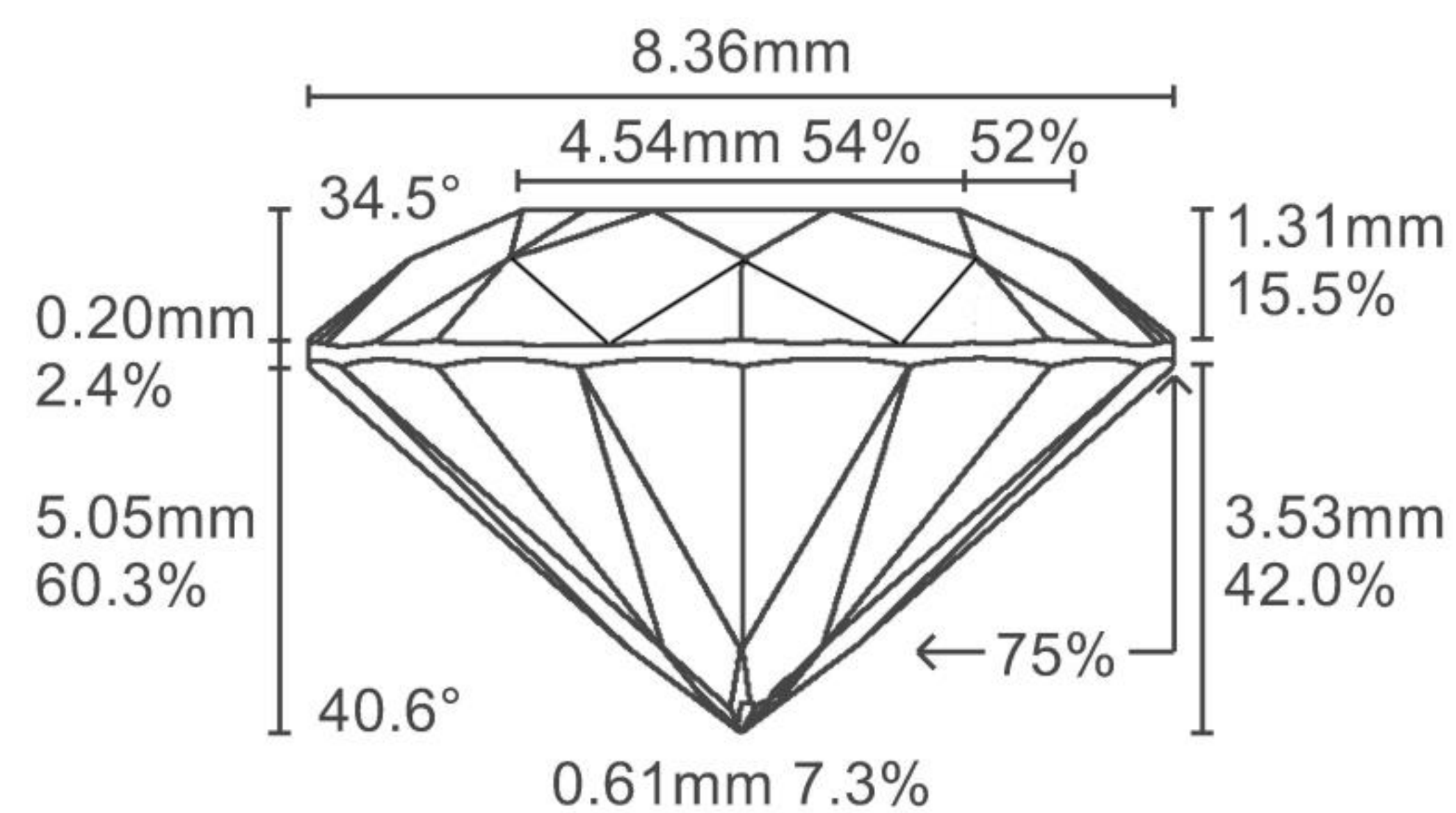
Actual Size



8.35 - 8.37 x 5.05 millimeters (mm)

Proportion Diagram

Optical scanning technology measures each facet and angle to produce an accurate, to-scale diagram of this natural diamond.



PHOTOMICROGRAPHS



Actual photographs of the crown (top) and pavilion (bottom) of this diamond photographed at magnifications up to 10x. View hi-res photos at <https://www.gcalusa.com/c/341910006>

Clarity Characteristics and Locations

Pinpoints Lower Girdle

LIGHT PERFORMANCE PROFILE



Hearts & Arrows **Excellent**

Precision faceting is visualized as Hearts and Arrows when brilliant cut stones are viewed in specific lighting conditions. Each pattern is the result of facet placement and alignment.

Optical Brilliance **Excellent**

Optical Brilliance is the overall return of white light to the viewer. It is measured to the thousandth decimal place and is represented in this image. The white areas indicate light return / brilliance, and the dark blue areas indicate light loss.

Optical Symmetry **Excellent**

Optical Symmetry is visualized in this photograph of your diamond taken in a specific colored lighting environment. The evenness of the pattern illustrates the precision and uniformity of facet shapes and alignment.

GCAL Certificate No. 341910006

Scan QR code to view photos of this diamond, grading scales, and to download a PDF of this certificate or go to <https://www.gcalusa.com/c/341910006>



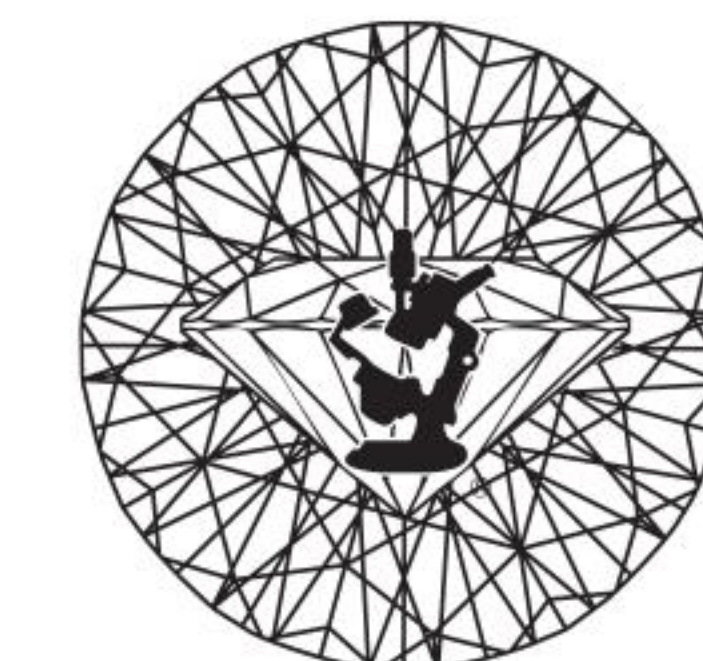
4C's GRADING

Carat Weight	2.14
Color	H
Clarity	VVS1
Cut	Ideal

Shape and Cutting Style	Round Modified Brilliant
Measurements	8.35 - 8.37 x 5.05mm
Polish	Excellent
Physical Symmetry	Excellent
Optical Brilliance	Excellent
Optical Symmetry	Excellent
Hearts & Arrows	Excellent
Table %	54%
Depth %	60.3%
Girdle	Medium, Faceted
Fluorescence	None
Inscription	"GCAL 341910006"
Treatment	None

ONE LOCATION. ONE STANDARD. GRADED IN THE USA

Gem Certification & Assurance Lab has examined this diamond and certifies that the specifications noted in this document are accurate within recognized gemological tolerances. GCAL is an independent third-party and stands behind our grading with a 4Cs Consumer Guarantee. The guarantee, grading scales and all images unique to this diamond are available at [GCALUSA.com](https://www.gcalusa.com).



Gem Certification & Assurance Lab, Inc.
ISO 17025 Accredited Forensic Laboratory

580 Fifth Ave, Flr 27
New York, NY 10036
T 212-869-8985
[GCALUSA.com](https://www.gcalusa.com)



ISO/IEC 17025 2017
ANAB L2177-1 Accredited Testing Lab