

# LAB GROWN DIAMOND

## GCAL LG341490158

June 05, 2024



The fingerprint system for diamonds



ID No. NY02-682565

Gemprint is the unique optical fingerprint of your lab grown diamond. This patented technology is positive, forensic identification. Protect your investment and receive discounts up to 10% off your annual insurance premiums.

Register your diamond at [Gemprint.com](https://www.gemprint.com)

### Laser Inscription

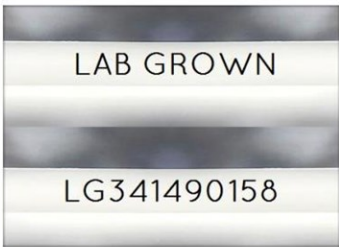
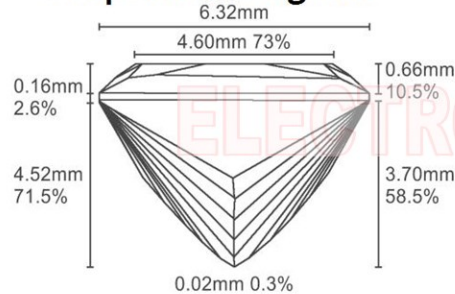


Illustration depicts approx. girdle appearance

### Proportion Diagram



### GCAL Certificate No. LG341490158

Scan QR code to view details of this lab grown diamond, grading scales, and to download a PDF of this certificate or go to <https://www.gcalusa.com/c/341490158>



## 4C's GRADING

Carat Weight	1.51
Color	G
Clarity	VS1
Cut	Excellent

Shape and Cutting Style	Princess
Measurements	6.39-6.32x4.52mm
Polish	Excellent
Physical Symmetry	Very Good
Optical Brilliance	Excellent
Optical Symmetry	Very Good
Table %	73%
Depth %	71.5%
Girdle	Thin - Medium
Culet	None
Fluorescence	None
Inscription	"LAB GROWN" & "LG341490158"
Growth Method	CVD



All certified diamonds come with an individual certificate, ONLY available at an accredited retailer.

← FOR THE SUSTAINABILITY RATED CERTIFICATE SCAN HERE



Certified SUSTAINABILITY RATED DIAMOND SCS GLOBAL SERVICES



GCAL GEM CERTIFICATION & ASSURANCE LAB ISO 17025 ACCREDITED FORENSIC LABORATORY

580 Fifth Ave, Flr 27, NYC, NY 10036 T 212-869-8985 GCALUSA.com

© Gem Certification & Assurance Lab, Inc.



ISO/IEC 17025 2017 ANAB L2177-1 Accredited Testing Lab

This laboratory grown diamond was created by the CVD (Chemical Vapor Deposition) method, and has the same chemical, physical and optical properties as a mined diamond.

### Clarity Characteristics and Locations

Crystals	Table, Crown Step
Pinpoints	Table