

# LAB GROWN DIAMOND

**GCAL LG340810536**

April 02, 2024



The fingerprint system for diamonds



**ID No. NY02-667443**

Gemprint is the unique optical fingerprint of your lab grown diamond. This patented technology is positive, forensic identification. Protect your investment and receive discounts up to 10% off your annual insurance premiums.

**Register your diamond at Gemprint.com**

## Laser Inscription

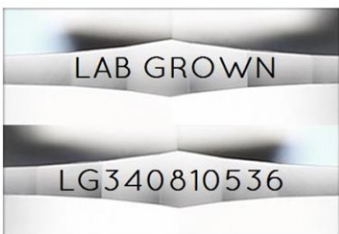
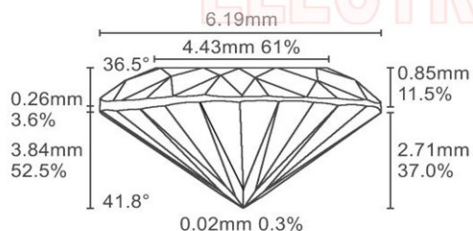


Illustration depicts approx. girdle appearance

## Proportion Diagram



**GCAL Certificate No. LG340810536**

Scan QR code to view details of this lab grown diamond, grading scales, and to download a PDF of this certificate or go to <https://www.gcalusa.com/c/340810536>



## 4C's GRADING

Carat Weight	1.01
Color	D
Clarity	VS1
Cut	Very Good

Shape and Cutting Style

**Heart Brilliant**

Measurements

**7.31-6.19x3.84mm**

Polish

**Good**

Physical Symmetry

**Good**

Optical Brilliance

**Excellent**

Optical Symmetry

**Good**

Table %

**61%**

Depth %

**52.5%**

Girdle

**Medium - Thick, Faceted**

Culet

**None**

Fluorescence

**None**

Inscription

**"LAB GROWN" & "LG340810536"**

Growth Method

**HPHT**

This laboratory grown diamond was created by the HPHT (High Pressure High Temperature) method, and has the same chemical, physical and optical properties as a mined diamond.

Clarity Characteristics and Locations

Needles	Table, Crown
Feathers	Upper Girdle, Lower Girdle
Pinpoint	Table



**GCAL** GEM CERTIFICATION & ASSURANCE LAB  
ISO 17025 ACCREDITED FORENSIC LABORATORY

580 Fifth Ave, Flr 27, NYC, NY 10036  
T 212-869-8985 GCALUSA.com

© Gem Certification & Assurance Lab, Inc.



ISO/IEC 17025 2017  
ANAB L2177-1 Accredited Testing Lab