

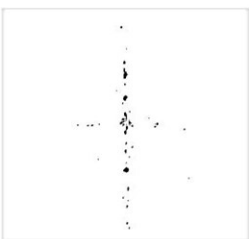
LAB GROWN DIAMOND

GCAL LG340810389

April 02, 2024



The fingerprint system for diamonds



ID No. NY02-667345

Gemprint is the unique optical fingerprint of your lab grown diamond. This patented technology is positive, forensic identification. Protect your investment and receive discounts up to 10% off your annual insurance premiums.

Register your diamond at Gemprint.com

Laser Inscription

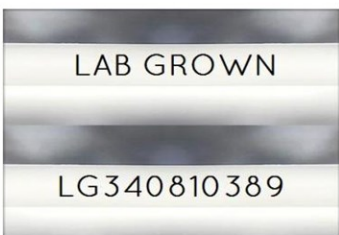
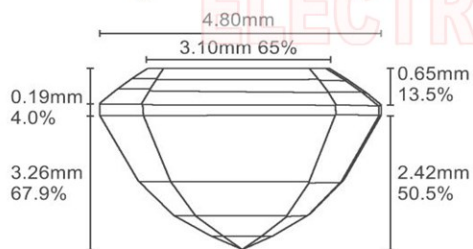


Illustration depicts approx. girdle appearance

Proportion Diagram



GCAL Certificate No. LG340810389

Scan QR code to view details of this lab grown diamond, grading scales, and to download a PDF of this certificate or go to <https://www.gcalusa.com/c/340810389>



4C's GRADING

| | |
|--------------|-----------|
| Carat Weight | 1.02 |
| Color | D |
| Clarity | VS1 |
| Cut | Very Good |

Shape and Cutting Style

Emerald Step

Measurements

6.51-4.80x3.26mm

Polish

Good

Physical Symmetry

Very Good

Optical Brilliance

Very Good

Optical Symmetry

Excellent

Table %

65%

Depth %

67.9%

Girdle

Medium - Sl.Thick

Culet

None

Fluorescence

None

Inscription

"LAB GROWN" & "LG340810389"

Growth Method

HPHT

This laboratory grown diamond was created by the HPHT (High Pressure High Temperature) method, and has the same chemical, physical and optical properties as a mined diamond.

Clarity Characteristics and Locations

Feather, Crystals
Cloud

Crown Step
Pavilion



GCAL GEM CERTIFICATION & ASSURANCE LAB
ISO 17025 ACCREDITED FORENSIC LABORATORY

580 Fifth Ave, Flr 27, NYC, NY 10036
T 212-869-8985 GCALUSA.com



ISO/IEC 17025 2017
ANAB L2177-1 Accredited Testing Lab

© Gem Certification & Assurance Lab, Inc.