

# LAB GROWN DIAMOND

**GCAL LG340640066**

March 13, 2024



The fingerprint system for diamonds



**ID No. NY02-662833**

Gemprint is the unique optical fingerprint of your lab grown diamond. This patented technology is positive, forensic identification. Protect your investment and receive discounts up to 10% off your annual insurance premiums.

**Register your diamond at Gemprint.com**

## Laser Inscription

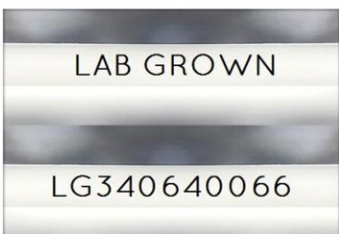
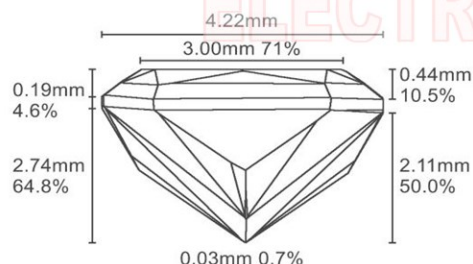


Illustration depicts approx. girdle appearance

## Proportion Diagram



**GCAL Certificate No. LG340640066**

Scan QR code to view details of this lab grown diamond, grading scales, and to download a PDF of this certificate or go to <https://www.gcalusa.com/c/340640066>



## 4C's GRADING

|              |           |
|--------------|-----------|
| Carat Weight | 0.56      |
| Color        | D         |
| Clarity      | VS2       |
| Cut          | Very Good |

|                         |  |
|-------------------------|--|
| Shape and Cutting Style | <b>Radiant Brilliant</b>               |
| Measurements            | <b>5.79-4.22x2.74mm</b>                |
| Polish                  | <b>Good</b>                            |
| Physical Symmetry       | <b>Very Good</b>                       |
| Optical Brilliance      | <b>Excellent</b>                       |
| Optical Symmetry        | <b>Very Good</b>                       |
| Table %                 | <b>71%</b>                             |
| Depth %                 | <b>64.8%</b>                           |
| Girdle                  | <b>Sl.Thick - Thick</b>                |
| Culet                   | <b>None</b>                            |
| Fluorescence            | <b>None</b>                            |
| Inscription             | <b>"LAB GROWN" &amp; "LG340640066"</b> |
| Growth Method           | <b>HPHT</b>                            |

This laboratory grown diamond was created by the HPHT (High Pressure High Temperature) method, and has the same chemical, physical and optical properties as a mined diamond.

## Clarity Characteristics and Locations

Feather Half Moon-Lower Girdle



**GCAL** GEM CERTIFICATION & ASSURANCE LAB  
ISO 17025 ACCREDITED FORENSIC LABORATORY

580 Fifth Ave, Flr 27, NYC, NY 10036  
T 212-869-8985 GCALUSA.com



© Gem Certification & Assurance Lab, Inc.

ISO/IEC 17025 2017  
ANAB L2177-1 Accredited Testing Lab