

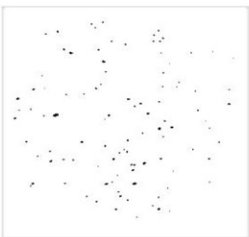
# LAB GROWN DIAMOND

**GCAL LG340530330**

March 04, 2024



The fingerprint system for diamonds



**ID No. NY02-660282**

Gemprint is the unique optical fingerprint of your lab grown diamond. This patented technology is positive, forensic identification. Protect your investment and receive discounts up to 10% off your annual insurance premiums.

**Register your diamond at Gemprint.com**

## Laser Inscription

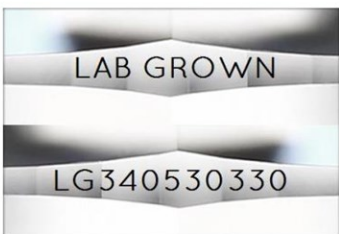
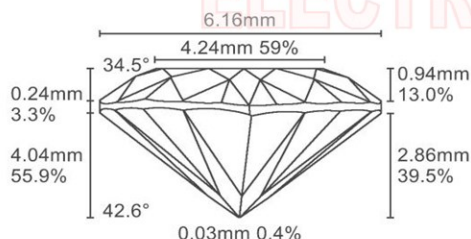


Illustration depicts approx. girdle appearance

## Proportion Diagram



**GCAL Certificate No. LG340530330**

Scan QR code to view details of this lab grown diamond, grading scales, and to download a PDF of this certificate or go to <https://www.gcalusa.com/c/340530330>



## 4C's GRADING

Carat Weight	1.04
Color	E
Clarity	VS2
Cut	Very Good

Shape and Cutting Style

**Heart Brilliant**

Measurements

**7.23-6.16x4.04mm**

Polish

**Good**

Physical Symmetry

**Good**

Optical Brilliance

**Excellent**

Optical Symmetry

**Very Good**

Table %

**59%**

Depth %

**55.9%**

Girdle

**Medium - Thick, Faceted**

Culet

**None**

Fluorescence

**None**

Inscription

**"LAB GROWN" & "LG340530330"**

Growth Method

**HPHT**

This laboratory grown diamond was created by the HPHT (High Pressure High Temperature) method, and has the same chemical, physical and optical properties as a mined diamond.

Clarity Characteristics and Locations

Needles	Table, Upper Girdle
Cavity	Upper Girdle



**GCAL** GEM CERTIFICATION & ASSURANCE LAB  
ISO 17025 ACCREDITED FORENSIC LABORATORY

580 Fifth Ave, Flr 27, NYC, NY 10036  
T 212-869-8985 GCALUSA.com



ISO/IEC 17025 2017  
ANAB L2177-1 Accredited Testing Lab

© Gem Certification & Assurance Lab, Inc.