

LAB GROWN DIAMOND

GCAL LG340091223

January 22, 2024



The fingerprint system for diamonds



ID No. NY02-648352

Gemprint is the unique optical fingerprint of your lab grown diamond. This patented technology is positive, forensic identification. Protect your investment and receive discounts up to 10% off your annual insurance premiums.

Register your diamond at [Gemprint.com](https://www.gemprint.com)

Laser Inscription

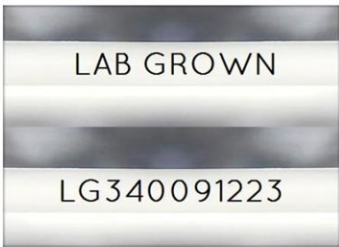
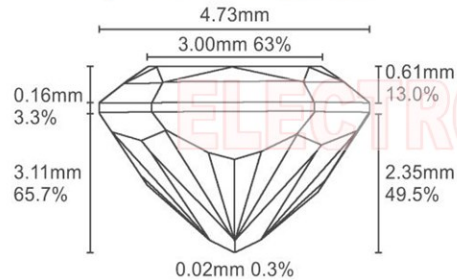


Illustration depicts approx. girdle appearance

Proportion Diagram



GCAL Certificate No. LG340091223

Scan QR code to view details of this lab grown diamond, grading scales, and to download a PDF of this certificate or go to <https://www.gcalusa.com/c/340091223>



4C's GRADING

Carat Weight	0.75
Color	E
Clarity	VS2
Cut	Excellent

Shape and Cutting Style

Radiant Brilliant

Measurements

6.30-4.73x3.11mm

Polish

Very Good

Physical Symmetry

Very Good

Optical Brilliance

Excellent

Optical Symmetry

Very Good

Table %

63%

Depth %

65.7%

Girdle

Medium

Culet

None

Fluorescence

None

Inscription

"LAB GROWN" & "LG340091223"

Growth Method

CVD



All certified diamonds come with an individual certificate, ONLY available at an accredited retailer.

← FOR THE SUSTAINABILITY RATED CERTIFICATE SCAN HERE



Certified
SUSTAINABILITY RATED DIAMOND
SCS GLOBAL SERVICES



GCAL GEM CERTIFICATION & ASSURANCE LAB
ISO 17025 ACCREDITED FORENSIC LABORATORY

580 Fifth Ave, Flr 27, NYC, NY 10036
T 212-869-8985 [GCALUSA.com](https://www.gcalusa.com)



ISO/IEC 17025 2017
ANAB L2177-1 Accredited Testing Lab

© Gem Certification & Assurance Lab, Inc.

This laboratory grown diamond was created by the CVD (Chemical Vapor Deposition) method, and has the same chemical, physical and optical properties as a mined diamond.

Clarity Characteristics and Locations

Pinpoints	Crown Shoulder, Crown Step, Table
Needle	Crown Step