

# LAB GROWN DIAMOND

**GCAL LG340091200**

January 22, 2024



The fingerprint system for diamonds



**ID No. NY02-648273**

Gemprint is the unique optical fingerprint of your lab grown diamond. This patented technology is positive, forensic identification. Protect your investment and receive discounts up to 10% off your annual insurance premiums.

**Register your diamond at Gemprint.com**

## Laser Inscription

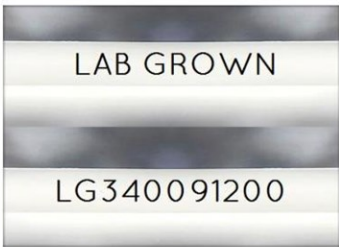
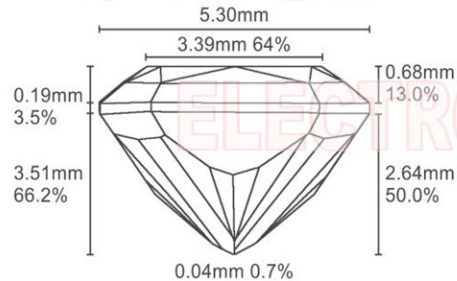


Illustration depicts approx. girdle appearance

## Proportion Diagram



## GCAL Certificate No. LG340091200

Scan QR code to view details of this lab grown diamond, grading scales, and to download a PDF of this certificate or go to <https://www.gcalusa.com/c/340091200>



## 4C's GRADING

Carat Weight	1.07
Color	E
Clarity	VS2
Cut	Excellent

## Shape and Cutting Style

**Radiant Brilliant**

## Measurements

**7.03-5.30x3.51mm**

## Polish

**Very Good**

## Physical Symmetry

**Very Good**

## Optical Brilliance

**Excellent**

## Optical Symmetry

**Very Good**

## Table %

**64%**

## Depth %

**66.2%**

## Girdle

**Medium - Sl.Thick**

## Culet

**None**

## Fluorescence

**None**

## Inscription

**"LAB GROWN" & "LG340091200"**

## Growth Method

**CVD**



All certified diamonds come with an individual certificate, ONLY available at an accredited retailer.

← FOR THE SUSTAINABILITY RATED CERTIFICATE SCAN HERE



*Certified*  
**SUSTAINABILITY RATED DIAMOND**  
SCS GLOBAL SERVICES



**GCAL** GEM CERTIFICATION & ASSURANCE LAB  
ISO 17025 ACCREDITED FORENSIC LABORATORY

580 Fifth Ave, Flr 27, NYC, NY 10036  
T 212-869-8985 GCALUSA.com



ISO/IEC 17025 2017  
ANAB L2177-1 Accredited Testing Lab

© Gem Certification & Assurance Lab, Inc.

This laboratory grown diamond was created by the CVD (Chemical Vapor Deposition) method, and has the same chemical, physical and optical properties as a mined diamond.

## Clarity Characteristics and Locations

Pinpoints Table