

# LAB GROWN DIAMOND

**GCAL LG332841195**

October 20, 2023



The fingerprint system for diamonds



**ID No. NY02-626394**

Gemprint is the unique optical fingerprint of your lab grown diamond. This patented technology is positive, forensic identification. Protect your investment and receive discounts up to 10% off your annual insurance premiums.

**Register your diamond at Gemprint.com**

## Laser Inscription

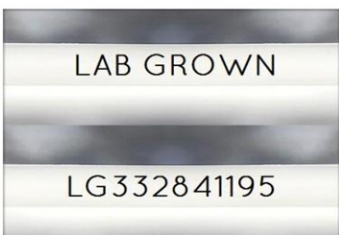


Illustration depicts approx. girdle appearance

## Proportion Diagram



**GCAL Certificate No. LG332841195**

Scan QR code to view details of this lab grown diamond, grading scales, and to download a PDF of this certificate or go to <https://www.gcalusa.com/c/332841195>



## 4C's GRADING

Carat Weight	0.86
Color	E
Clarity	VS2
Cut	Very Good

Shape and Cutting Style

**Radiant Brilliant**

Measurements

**6.68-4.82x3.17mm**

Polish

**Good**

Physical Symmetry

**Very Good**

Optical Brilliance

**Very Good**

Optical Symmetry

**Excellent**

Table %

**66%**

Depth %

**65.9%**

Girdle

**Sl.Thick - Thick**

Culet

**None**

Fluorescence

**None**

Inscription

**"LAB GROWN" & "LG332841195"**

Growth Method

**HPHT**

This laboratory grown diamond was created by the HPHT (High Pressure High Temperature) method, and has the same chemical, physical and optical properties as a mined diamond.

Clarity Characteristics and Locations

Crystals,Cavity  
Feathers

Crown Step  
Crown Step,Pavilion



**GCAL** GEM CERTIFICATION & ASSURANCE LAB  
ISO 17025 ACCREDITED FORENSIC LABORATORY

580 Fifth Ave, Flr 27, NYC, NY 10036  
T 212-869-8985 GCALUSA.com



ISO/IEC 17025 2017  
ANAB L2177-1 Accredited Testing Lab

© Gem Certification & Assurance Lab, Inc.