

May 24, 2022



GCAL Certificate No:

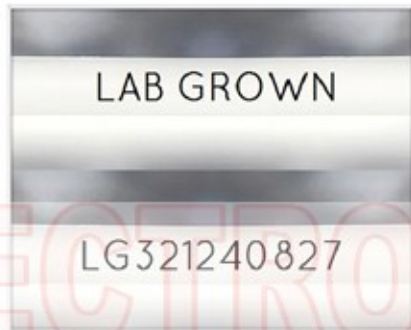
321240827



is the unique optical fingerprint for positive identification of your lab grown diamond. Protect your investment by registering your lab grown diamond at [www.Gemprint.com](http://www.Gemprint.com) and receive insurance discounts up to 10%



Gemprint



Girdle laser inscribed "LAB GROWN" and "LG321240827"

\*Comments: This laboratory grown diamond was created by the CVD (Chemical Vapor Deposition) method, and has the same chemical, physical, and optical properties as a mined diamond. This diamond is Type IIa, which means it is devoid of nitrogen impurities.



**GCAL** GEM CERTIFICATION & ASSURANCE LAB  
ISO 17025 ACCREDITED FORENSIC LABORATORY

580 Fifth Ave LL-05, New York, NY 10036  
T 212-869-8985 GCALUSA.com

© Gem Certification & Assurance Lab, Inc.



ISO/IEC 17025 2017  
ANAB L2177-1 Accredited Testing Lab

## LAB GROWN DIAMOND\*

**Carat Weight:** 0.81

**Cut:** Excellent

Shape: Emerald Step

Measurements: 6.74x4.40x2.82mm

Polish: Excellent

External Symmetry: Very Good

Girdle Thickness: Medium

Culet Size: None

**Color:** G

Fluorescence: None

**Clarity:** VS1

Identifying Characteristic(s): Crystals/Pinpoints

Characteristic Location(s): Table, Crown Step/Crown

### Proportion Diagram:

The proportion diagram illustrates the actual dimensions as recorded by optical scanning technology.

