

February 21, 2022



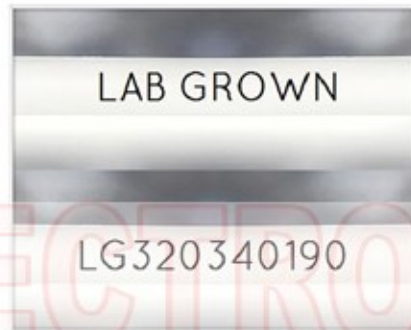
GCAL Certificate No:

320340190

**Gemprint** is the unique optical fingerprint for positive identification of your lab grown diamond. Protect your investment by registering your lab grown diamond at [www.Gemprint.com](http://www.Gemprint.com) and receive insurance discounts up to 10%



Gemprint



Girdle laser inscribed "LAB GROWN" and "LG320340190"

\*Comments: This laboratory grown diamond was created by the CVD (Chemical Vapor Deposition) method, and has the same chemical, physical, and optical properties as a mined diamond. This diamond is Type IIa, which means it is devoid of nitrogen impurities.



**GCAL** GEM CERTIFICATION & ASSURANCE LAB  
ISO 17025 ACCREDITED FORENSIC LABORATORY

580 Fifth Ave LL-05, New York, NY 10036  
T 212-869-8985 GCALUSA.com

© Gem Certification & Assurance Lab, Inc.



ISO/IEC 17025 2017  
ANAB L2177-1 Accredited Testing Lab

## LAB GROWN DIAMOND\*

<b>Carat Weight:</b>	<b>1.75</b>
<b>Cut:</b>	<b>Excellent</b>
Shape:	Princess
Measurements:	6.60x6.54x4.76mm
Polish:	Excellent
External Symmetry:	Very Good
Girdle Thickness:	Thin-Medium
Culet Size:	None
<b>Color:</b>	<b>G</b>
Fluorescence:	None
<b>Clarity:</b>	<b>VS1</b>
Identifying Characteristic(s):	Crystal/Pinpoints
Characteristic Location(s):	Table/Table,Crown Step

### Proportion Diagram:

The proportion diagram illustrates the actual dimensions as recorded by optical scanning technology.

