

# LAB GROWN DIAMOND

**GCAL LG320090823**

January 26, 2022



## 4C's GRADING

Carat Weight **2.26**  
Color **E**  
Clarity **VS2**  
Cut **8X**

Certificate No	<b>GCAL LG320090823</b>
Identification	<b>Lab Grown Diamond</b>
Shape and Cutting Style	<b>Round Brilliant</b>
Measurements	<b>8.43-8.46x5.17mm</b>
Fluorescence	<b>None</b>
Girdle	<b>Medium to Sl.Thick, Faceted</b>
Culet	<b>None</b>
Inscription	<b>LAB GROWN, GCAL 8X LG320090823</b>

### ONE LOCATION. ONE STANDARD. GRADED IN THE USA

Gem Certification & Assurance Lab has examined this lab grown diamond and certifies that the specifications noted in this document are accurate within recognized gemological tolerances. GCAL is an independent third-party and stands behind our grading with a 4Cs Consumer Guarantee. The guarantee, grading scales and all images unique to this lab grown diamond are available at GCALUSA.com.



© Gem Certification & Assurance Lab, Inc.

ANAB 17025 2017 Accredited Testing Lab

This laboratory grown diamond was created by the HPHT (High Pressure High Temperature) method and has the same chemical, physical, and optical properties as a mined diamond. This diamond is Type II.



The fingerprint system for diamonds

Gemprint is the unique optical fingerprint of your lab grown diamond. This patented technology is positive, forensic identification.

Protect your investment by registering your lab grown diamond and receive discounts up to 10% off your annual insurance premiums. **Register your diamond at GEMPRINT.com**

## Laser Inscription

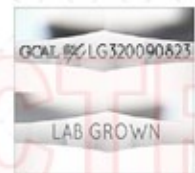
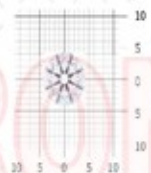


Illustration depicts approx. girdle appearance

## Actual Size



Measurements in millimeters (mm)

## Photomicrographs



Actual photographs of the crown and pavilion of this lab grown diamond. View hi-resolution photos at GCALUSA.com

### Clarity Characteristics and Locations

Crystals	Table
Needles	Bezel, Star

© Gem Certification & Assurance Lab, Inc.

**8X** is the ultimate achievement in precision diamond cutting. Only extraordinarily brilliant and beautiful diamonds achieve **EXCELLENT** grades in all **EIGHT** aspects of CUT quality assessment.



## Optical Brilliance

is the overall return of white light to the viewer. It is measured to the thousandth decimal place and is represented in this image. The white areas indicate light return / brilliance, and the dark-blue areas indicate light loss.



## Fire

results when white light travels through a diamond and is dispersed into its rainbow of spectral colors. These flashes of color contribute to sparkle and are best viewed as the diamond moves.



## Scintillation

is the flashes of white light, or sparkle, produced when light is reflected from a diamond as it moves. This image shows the light returned from a single beam of light when your lab grown diamond is rotated in nine positions.



## Optical Symmetry

is visualized in this photograph of your lab grown diamond taken in a specific colored lighting environment. The evenness of the pattern illustrates the precision and uniformity of facet shapes and alignment.



## Hearts & Arrows

Precision faceting is visualized as Hearts & Arrows when round brilliant cut diamonds are viewed in specific lighting conditions. Each pattern is the result of superior facet placement and exact alignment.



© Gem Certification & Assurance Lab, Inc.

**GCAL LG320090823 RB 2.26 E VS2 8X**

Scan QR code to view photos and videos of this lab grown diamond, and the **8X** grading scales, or go to <https://www.gcalusa.com/c/320090823>



### 1. Polish

P	F	G	VG	<b>EX</b>
Poor	Fair	Good	Very Good	Excellent

### 2. External Symmetry

P	F	G	VG	<b>EX</b>
Poor	Fair	Good	Very Good	Excellent

### 3. Proportions

P	F	G	VG	<b>EX</b>
Poor	Fair	Good	Very Good	Excellent

### 4. Optical Brilliance

P	F	G	VG	<b>EX</b>
Poor	Fair	Good	Very Good	Excellent

### 5. Fire

P	F	G	VG	<b>EX</b>
Poor	Fair	Good	Very Good	Excellent

### 6. Scintillation

P	F	G	VG	<b>EX</b>
Poor	Fair	Good	Very Good	Excellent

### 7. Optical Symmetry

P	F	G	VG	<b>EX</b>
Poor	Fair	Good	Very Good	Excellent

### 8. Hearts & Arrows

P	F	G	VG	<b>EX</b>
Poor	Fair	Good	Very Good	Excellent

## Proportion Diagram

Optical scanning technology measures each facet and angle to produce an accurate, to-scale diagram of this lab grown diamond.

