

# Identification Data



October 14, 2021  
 NATURAL DIAMOND  
 Certificate No: 312640508

## Gemprint

Gemprint is the unique optical fingerprint for positive identification of your diamond. Protect your investment by registering your diamond at [www.Gemprint.com](http://www.Gemprint.com) and receive insurance discounts up to 10%.



### Laser Inscription:

The illustration depicts enlarged and approximate appearances of the inscriptions. Girdle laser inscribed "AKARA 312640508"



# The 4Cs Grading Analysis

Certificate Number: 312640508

Carat Weight: 1.01

Cut: Very Good  
 Shape: Emerald Step  
 Measurements: 6.95x4.54x3.30mm  
 Optical Brilliance: Excellent  
 Optical Symmetry: Good  
 Polish: Very Good  
 External Symmetry: Very Good  
 Girdle Thickness: SI.Thick-Thick  
 Culet Size: None  
 Table %: 60.0%  
 Depth %: 72.6%

Color: Fancy Orangy Brown  
 Fluorescence: None  
 Treatment: None

Clarity: I1  
 Identifying Characteristic(s): Feather/Crystals/Cloud/Natural  
 Characteristic Location(s): Table,Crown Step,Pavilion/Table/  
 Table-Crown Step/Crown Step  
 Treatment: None

Photomicrographs:  
 Actual images of the crown (top) and pavilion (bottom) of this diamond photographed at magnifications up to 10x.



# Light Performance Profile

## Optical Brilliance Analysis:

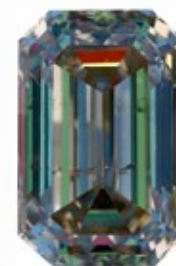
Brilliance is the overall return of light to the viewer. The brilliance image is a representation of (a) white areas of light return, or brilliance, and (b) dark-blue areas of light loss.



Optical Brilliance  
 Excellent

## Optical Symmetry Analysis:

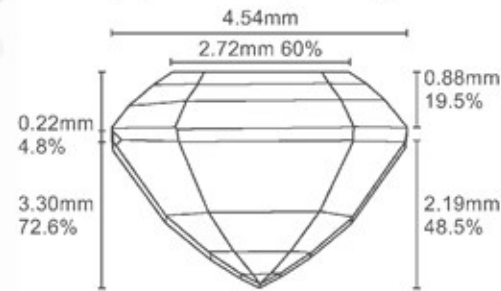
The colored areas of the symmetry image are indications of light handling ability, giving a visual representation of proportions and facet alignment.



Optical Symmetry  
 Good

## Proportion Diagram:

The proportion diagram illustrates the actual dimensions as recorded by optical scanning technology.



580 Fifth Avenue, Lower Lobby, New York, NY 10036  
 T 212.869.8985 F 212.869.2315, [www.gemfacts.com](http://www.gemfacts.com)