

August 05, 2021



GCAL Certificate No:

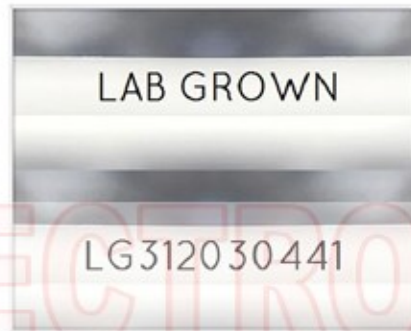
312030441



is the unique optical fingerprint for positive identification of your lab grown diamond. Protect your investment by registering your lab grown diamond at [www.Gemprint.com](http://www.Gemprint.com) and receive insurance discounts up to 10%



Gemprint



Girdle laser inscribed "LAB GROWN" and "LG312030441"

\*Comments: This laboratory grown diamond was created by the CVD (Chemical Vapor Deposition) method, and has the same chemical, physical, and optical properties as a mined diamond. This diamond is Type IIa, which means it is devoid of nitrogen impurities.



**GCAL** GEM CERTIFICATION & ASSURANCE LAB  
ISO 17025 ACCREDITED FORENSIC LABORATORY

580 Fifth Ave LL-05, New York, NY 10036  
T 212-869-8985 GCALUSA.com

© Gem Certification & Assurance Lab, Inc.



ISO/IEC 17025 2017  
ANAB L2177-1 Accredited Testing Lab

## LAB GROWN DIAMOND\*

**Carat Weight:** 1.69

**Cut:** Excellent

Shape: Princess

Measurements: 6.66x6.50x4.74mm

Polish: Excellent

External Symmetry: Good

Girdle Thickness: Medium

Culet Size: None

**Color:** I

Fluorescence: None

**Clarity:** VS1

Identifying Characteristic(s): Cloud

Characteristic Location(s): Table-Crown Shoulder

### Proportion Diagram:

The proportion diagram illustrates the actual dimensions as recorded by optical scanning technology.

