

## Identification Data



June 30, 2021

LAB GROWN DIAMOND  
Certificate No: 311740015

### Gemprint

Gemprint is the unique optical fingerprint for positive identification of your lab grown diamond. Register your lab grown diamond at [www.Gemprint.com](http://www.Gemprint.com) and receive insurance discounts up to 10%.



### Laser Inscription:

The illustration depicts enlarged and approximate appearances of the inscriptions. Girdle laser inscribed "LAB GROWN" and "LG311740015"  
Previous inscription is present on the girdle



## The 4Cs Grading Analysis

GCAL 311740015

LAB GROWN DIAMOND\*

**Carat Weight:**

0.82

**Cut:**  
Shape:  
Measurements:  
Hearts:  
Arrows:  
Optical Brilliance:  
Optical Symmetry:  
Polish:  
External Symmetry:  
Girdle Thickness:  
Culet Size:

**Ideal**  
Round Brilliant  
6.04-6.07x3.65mm  
Excellent  
Excellent  
Excellent  
Excellent  
Excellent  
Medium-Sl.Thick  
None

**Color:**  
Fluorescence:

**G**  
None

**Clarity:**  
Identifying Characteristic(s):  
Characteristic Location(s):

**VVS2**  
Pinpoints  
Bezel, Table

\*Comments: This man-made diamond was grown in a laboratory by the CVD method, and has the same chemical, physical, and optical properties as a natural earth mined diamond.

### Photomicrographs:

Actual images of the crown (top) and pavilion (bottom) of this diamond photographed at magnifications up to 10x.



## Light Performance Profile

### Hearts and Arrows:

Precision faceting is visualized as Hearts and Arrows when brilliant cut stones are viewed in specific lighting conditions. Each pattern is the result of facet placement and alignment.



Hearts  
Excellent



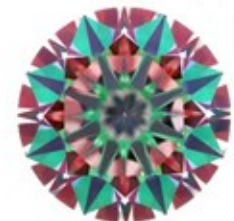
Arrows  
Excellent

### Optical Light Performance:

A direct assessment of a diamond's light handling ability via actual photographs. Brilliance is the overall return of light to the viewer. The brilliance image shows the light return (white areas) and light loss (dark blue areas). The colored pattern of the symmetry image is a visual representation of the facet alignment.



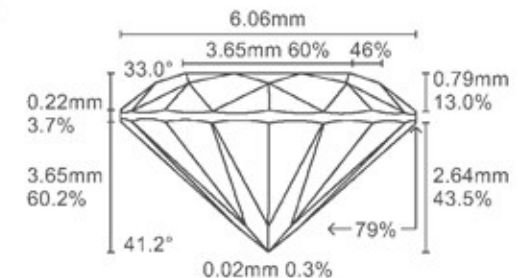
Optical Brilliance  
Excellent



Optical Symmetry  
Excellent

### Proportion Diagram:

The proportion diagram illustrates the actual dimensions as recorded by optical scanning technology.



**GCAL** GEM CERTIFICATION & ASSURANCE LAB  
ISO 17025 ACCREDITED FORENSIC LABORATORY

580 Fifth Avenue LL-05, NY, NY 10036 USA • T 212.869.8985 • GCALUSA.com

ISO/IEC 17025:2017  
ANAB L2177-1  
Accredited Testing Lab



Guaranteed Lab Grown Diamond Grading Certificate