

June 24, 2021



GCAL Certificate No:

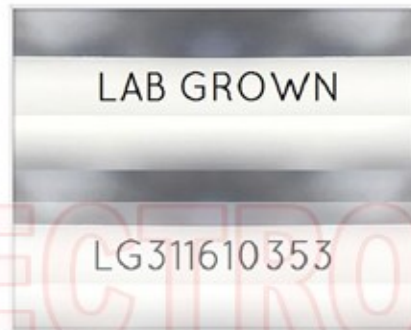
311610353



is the unique optical fingerprint for positive identification of your lab grown diamond. Protect your investment by registering your lab grown diamond at www.Gemprint.com and receive insurance discounts up to 10%



Gemprint



Girdle laser inscribed "LAB GROWN" and "LG311610353"

*Comments: This man-made diamond was grown in a laboratory by the CVD method, and has the same chemical, physical, and optical properties as a natural earth mined diamond. This lab grown diamond is classified as Type IIa, which is the most chemically pure type of diamond, and almost or entirely devoid of impurities. Only 1-2% of natural earth mined diamonds are Type IIa, whereas, colorless and near-colorless CVD lab grown diamonds are usually Type IIa.



GCAL GEM CERTIFICATION & ASSURANCE LAB
ISO 17025 ACCREDITED FORENSIC LABORATORY

580 Fifth Ave LL-05, New York, NY 10036
T 212-869-8985 GCALUSA.com

© Gem Certification & Assurance Lab, Inc.



ISO/IEC 17025 2017
ANAB L2177-1 Accredited Testing Lab

LAB GROWN DIAMOND*

Carat Weight: 1.65

Cut: Excellent

Shape: Princess

Measurements: 6.36x6.32x4.64mm

Polish: Very Good

External Symmetry: Very Good

Girdle Thickness: Thick

Culet Size: None

Color: G

Fluorescence: None

Clarity: VVS2

Identifying Characteristic(s): Pinpoints/Feather

Characteristic Location(s): Table, Crown Step/Chevron

Proportion Diagram:

The proportion diagram illustrates the actual dimensions as recorded by optical scanning technology.

