

November 17, 2020



GCAL Certificate No:

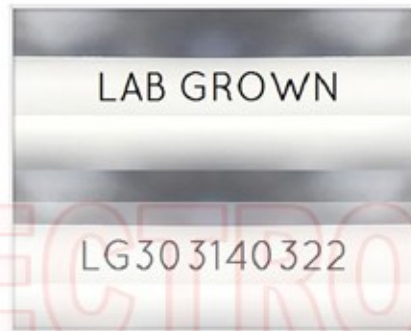
303140322



Gemprint is the unique optical fingerprint for positive identification of your lab grown diamond. Protect your investment by registering your lab grown diamond at www.Gemprint.com and receive insurance discounts up to 10%



Gemprint



Girdle laser inscribed "LAB GROWN" and "LG303140322"

*Comments: This man-made diamond was grown in a laboratory by the CVD method, and has the same chemical, physical, and optical properties as a natural earth mined diamond. This lab grown diamond is classified as Type IIa, which is the most chemically pure type of diamond, and almost or entirely devoid of impurities. Only 1-2% of natural earth mined diamonds are Type IIa, whereas, colorless and near-colorless CVD lab grown diamonds are usually Type IIa.



LAB GROWN DIAMOND*

Carat Weight:	1.50
Cut:	Excellent
Shape:	Princess
Measurements:	6.30x6.12x4.48mm
Polish:	Excellent
External Symmetry:	Very Good
Girdle Thickness:	Medium-SI.Thick
Culet Size:	None
Color:	G
Fluorescence:	None
Clarity:	SI1
Identifying Characteristic(s):	Crystals
Characteristic Location(s):	Table,Crown Shoulder,Crown Step

Proportion Diagram:

The proportion diagram illustrates the actual dimensions as recorded by optical scanning technology.

