

# LAB GROWN DIAMOND

**GCAL LG303140315**

January 09, 2026



*The fingerprint system for diamonds*



**ID No. NY02-364441**

Gemprint is the unique optical fingerprint of your lab grown diamond. This patented technology is positive, forensic identification. Protect your investment and receive discounts up to 10% off your annual insurance premiums.

**Register your diamond at [Gemprint.com](https://www.gemprint.com)**

## Laser Inscription

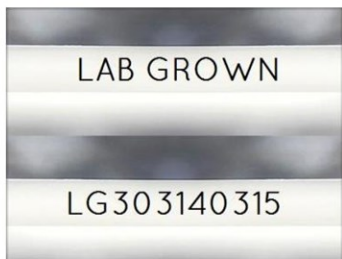
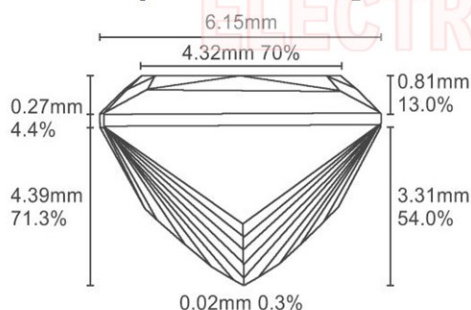


Illustration depicts approx. girdle appearance

## Proportion Diagram



**GCAL Certificate No. LG303140315**

Scan QR code to view details of this lab grown diamond, grading scales, and to download a PDF of this certificate or go to <https://www.gcalusa.com/c/303140315>



## 4C's GRADING

Carat Weight	1.48
Color	G
Clarity	VS1
Cut	Very Good

Shape and Cutting Style	Princess
Measurements	6.21x6.15x4.39mm
Polish	Very Good
Physical Symmetry	Good
Optical Brilliance	Excellent
Optical Symmetry	Good
Table %	70%
Depth %	71.3%
Girdle	Thick - Very Thick
Culet	None
Fluorescence	None
Inscription	"LAB GROWN" & "LG303140315"
Growth Method	CVD

This laboratory grown diamond was created by the CVD (Chemical Vapor Deposition) method, and has the same chemical, physical and optical properties as a mined diamond.

## Clarity Characteristics and Locations

Crystals	Table
Feathers	Chevron



The specifications noted in this certificate are accurate within recognized gemological tolerances. We stand behind our grading with a 4Cs Consumer Guarantee. Kindly see additional details, including the limitation of the guarantee, at [www.gcalusa.com](https://www.gcalusa.com).

### GCAL BY SARINE

GCALUSA.com  
T +1 212-869-8985  
© GCAL USA LLC

Headquarters:  
580 Fifth Ave, Flr. 27,  
New York, NY 10036

Laboratories:  
New York, USA  
Surat, INDIA