

September 18, 2020



GCAL Certificate No:

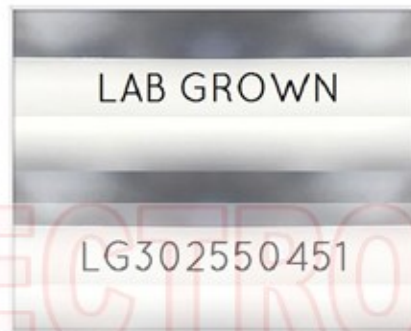
302550451



is the unique optical fingerprint for positive identification of your lab grown diamond. Protect your investment by registering your lab grown diamond at [www.Gemprint.com](http://www.Gemprint.com) and receive insurance discounts up to 10%



Gemprint



Girdle laser inscribed "LAB GROWN" and "LG302550451"

\*Comments: This man-made diamond was grown in a laboratory by the CVD method, and has the same chemical, physical, and optical properties as a natural earth mined diamond. This lab grown diamond is classified as Type IIa, which is the most chemically pure type of diamond, and almost or entirely devoid of impurities. Only 1-2% of natural earth mined diamonds are Type IIa, whereas, colorless and near-colorless CVD lab grown diamonds are usually Type IIa.



**GCAL** GEM CERTIFICATION & ASSURANCE LAB  
ISO 17025 ACCREDITED FORENSIC LABORATORY

580 Fifth Ave LL-05, New York, NY 10036  
T 212-869-8985 GCALUSA.com

© Gem Certification & Assurance Lab, Inc.



ISO/IEC 17025 2017  
ANAB L2177-1 Accredited Testing Lab

## LAB GROWN DIAMOND\*

**Carat Weight:** 1.02

**Cut:** Very Good

Shape: Princess

Measurements: 5.43x5.26x4.00mm

Polish: Very Good

External Symmetry: Very Good

Girdle Thickness: SI.Thick-Thick

Culet Size: None

**Color:** G

Fluorescence: None

**Clarity:** VVS2

Identifying Characteristic(s): Feather/Pinpoint

Characteristic Location(s): Half Moon-Girdle/

Throughout Crown

### Proportion Diagram:

The proportion diagram illustrates the actual dimensions as recorded by optical scanning technology.

