

## Identification Data



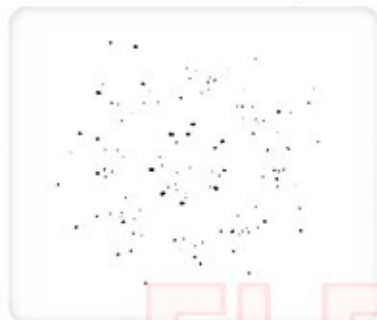
November 11, 2019

LAB GROWN DIAMOND

Certificate No: 292950174



Gemprint is the unique optical fingerprint for positive identification of your lab grown diamond. Register your lab grown diamond at [www.Gemprint.com](http://www.Gemprint.com) and receive insurance discounts up to 10%.



### Laser Inscription:

The illustration depicts enlarged and approximate appearances of the inscriptions. Girdle laser inscribed "LAB GROWN" and "LG292950174"



## The 4Cs Grading Analysis

GCAL 292950174

LAB GROWN DIAMOND\*

Carat Weight:

1.57

Cut:

Ideal

Shape:

Round Brilliant

Measurements:

7.39-7.44x4.62mm

Optical Brilliance:

Excellent

Optical Symmetry:

Excellent

Polish:

Excellent

External Symmetry:

Excellent

Girdle Thickness:

Medium-Sl.Thick

Culet Size:

None

Color:

I

Fluorescence:

None

Clarity:

VS1

Identifying Characteristic(s):

Crystals/Pinpoints

Characteristic Location(s):

Table,Star/Throughout Crown

\*Comments: This man-made diamond was grown in a laboratory by the CVD method, and has the same chemical, physical, and optical properties as an earth mined diamond.

### Photomicrographs:

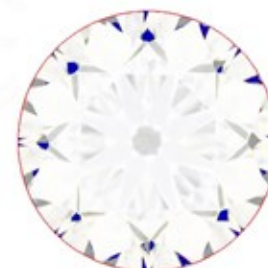
Actual images of the crown (top) and pavilion (bottom) of this diamond photographed at magnifications up to 10x.



## Light Performance Profile

### Optical Brilliance Analysis:

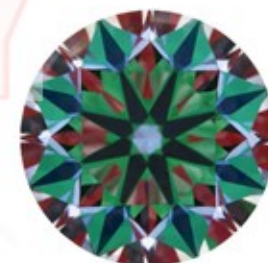
Brilliance is the overall return of light to the viewer. The brilliance image is a representation of (a) white areas of light return, or brilliance, and (b) dark-blue areas of light loss.



Optical Brilliance  
Excellent

### Optical Symmetry Analysis:

The colored areas of the symmetry image are indications of light handling ability, giving a visual representation of proportions and facet alignment.



Optical Symmetry  
Excellent

### Proportion Diagram:

The proportion diagram illustrates the actual dimensions as recorded by optical scanning technology.



ISO/IEC 17025:2017 ANAB Accredited Testing Lab  
580 Fifth Avenue, New York, NY 10036, T 212.869.8985 F 212.869.2315  
[www.DiamondID.com](http://www.DiamondID.com), [www.GemFacts.com](http://www.GemFacts.com), [www.Gemprint.com](http://www.Gemprint.com)