

## Identification Data



September 20, 2019  
 LAB GROWN DIAMOND  
 Certificate No: 292470416

### Gemprint®

Gemprint is the unique optical fingerprint for positive identification of your lab grown diamond. Register your lab grown diamond at [www.Gemprint.com](http://www.Gemprint.com) and receive insurance discounts up to 10%.



### Laser Inscription:

The illustration depicts enlarged and approximate appearances of the inscriptions. Girdle laser inscribed "LAB GROWN" and "LG292470416"



## The 4Cs Grading Analysis

GCAL 292470416

LAB GROWN DIAMOND\*

Carat Weight: 1.73

Cut: Excellent  
 Shape: Round Brilliant  
 Measurements: 7.70-7.73x4.68mm  
 Optical Brilliance: Excellent  
 Optical Symmetry: Excellent  
 Polish: Excellent  
 External Symmetry: Very Good  
 Girdle Thickness: Medium-SI.Thick  
 Culet Size: None

Color: I  
 Fluorescence: None

Clarity: SI1  
 Identifying Characteristic(s): Cloud  
 Characteristic Location(s): Table

\*Comments: This man-made diamond was grown in a laboratory by the CVD method, and has the same chemical, physical, and optical properties as an earth mined diamond.

### Photomicrographs:

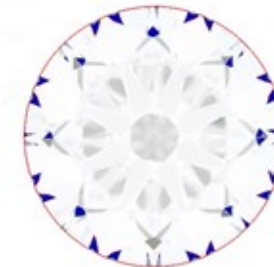
Actual images of the crown (top) and pavilion (bottom) of this diamond photographed at magnifications up to 10x.



## Light Performance Profile

### Optical Brilliance Analysis:

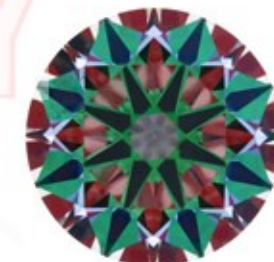
Brilliance is the overall return of light to the viewer. The brilliance image is a representation of (a) white areas of light return, or brilliance, and (b) dark-blue areas of light loss.



Optical Brilliance  
Excellent

### Optical Symmetry Analysis:

The colored areas of the symmetry image are indications of light handling ability, giving a visual representation of proportions and facet alignment.



Optical Symmetry  
Excellent

### Proportion Diagram:

The proportion diagram illustrates the actual dimensions as recorded by optical scanning technology.



**GCAL**  
 GEM CERTIFICATION & ASSURANCE LAB  
 INTEGRITY GUARANTEED™



ISO/IEC 17025:2017 ANAB Accredited Testing Lab  
 580 Fifth Avenue, New York, NY 10036, T 212.869.8985 F 212.869.2315  
[www.DiamondID.com](http://www.DiamondID.com), [www.GemFacts.com](http://www.GemFacts.com), [www.Gemprint.com](http://www.Gemprint.com)

Guaranteed Lab Grown Diamond Grading Certificate